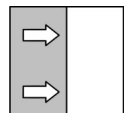




Operating manual

ME11

Pressure Transmitter



Masthead

Manufacturer:**FISCHER Mess- und Regeltechnik GmbH**Bielefelderstr. 37a
D-32107 Bad SalzufenTelephone: +49 5222 974 0
Telefax: +49 5222 7170eMail: info@fischermesstechnik.deweb: www.fischermesstechnik.de**Technical editorial team:**

Documentation representative: T. Malischewski

Technical editor: R. Kleemann

All rights, also those to the translation, reserved. No part of this document may be reproduced or processed, duplicated or distributed using electronic systems or any other form (print, photocopy, microfilm or another process) without the written consent of the company FISCHER Mess- und Regeltechnik GmbH, Bad Salzufen.

Reproduction for internal use is expressly allowed.

Brand names and procedures are used for information purposes only and do not take the respective patent situation into account. Great care was taken when compiling the texts and illustrations; Nevertheless, errors cannot be ruled out. The company FISCHER Mess- und Regeltechnik GmbH will not accept any legal responsibility or liability for this.

Subject to technical amendments.



© FISCHER Mess- und Regeltechnik GmbH 2015

Version history

Rev. ST4-A 09/15	Version 1 (first edition)
Rev. ST4-B 04/22	Version 2 (UKCA Declaration of Conformity)

Table of contents

1 Safety guidelines	4
1.1 General.....	4
1.2 Personnel Qualification.....	4
1.3 Risks due to Non-Observance of Safety Instructions	4
1.4 Safety Instructions for the Operating Company and the Operator	4
1.5 Unauthorised Modification	4
1.6 Inadmissible Modes of Operation	5
1.7 Safe working practices for maintenance and installation work	5
1.8 Pictogram explanation	5
2 Product and functional description	6
2.1 Intended use.....	6
2.2 Product summary	6
2.3 Function diagram.....	7
2.4 Design and mode of operation	7
3 Installation and assembly	8
3.1 Generalities	8
3.2 Process connection	8
3.3 Electrical connections.....	10
3.4 Commissioning	12
4 Servicing.....	13
4.1 Maintenance	13
4.2 Transport	13
4.3 Service.....	13
4.4 accessories.....	13
4.5 Disposal.....	13
5 Technical Data	14
5.1 General information	14
5.2 Input variables	14
5.3 Output parameters.....	15
5.4 Measurement accuracy	15
5.5 Auxiliary energy	15
5.6 Operating conditions.....	15
5.7 Construction design.....	16
6 Order Codes	18
7 Attachments	21

1 Safety guidelines

1.1 General

This operating manual contains basic instructions for the installation, operation and maintenance of the device that must be followed without fail. It must be read by the installer, the operator and the responsible specialist personnel before installing and commissioning the device.

This operating manual is an integral part of the product and therefore needs to be kept close to the instrument in a place that is accessible at all times to the responsible personnel.

The following sections, in particular instructions about the assembly, commissioning and maintenance, contain important information, non-observance of which could pose a threat to humans, animals, the environment and property.

The instrument described in these operating instructions is designed and manufactured in line with the state of the art and good engineering practice.

1.2 Personnel Qualification

The instrument may only be installed and commissioned by specialized personnel familiar with the installation, commissioning and operation of this product.

Specialized personnel are persons who can assess the work they have been assigned and recognize potential dangers by virtue of their specialized training, their skills and experience and their knowledge of the pertinent standards.

1.3 Risks due to Non-Observance of Safety Instructions

Non-observance of these safety instructions, the intended use of the device or the limit values given in the technical specifications can be hazardous or cause harm to persons, the environment or the plant itself.

The supplier of the equipment will not be liable for damage claims if this should happen.

1.4 Safety Instructions for the Operating Company and the Operator

The safety instructions governing correct operation of the instrument must be observed. The operating company must make them available to the installation, maintenance, inspection and operating personnel.

Dangers arising from electrical components, energy discharged by the medium, escaping medium and incorrect installation of the device must be eliminated. See the information in the applicable national and international regulations.

Please observe the information about certification and approvals in the Technical Data section.

1.5 Unauthorised Modification

Modifications of or other technical alterations to the instrument by the customer are not permitted. This also applies to replacement parts. Only the manufacturer is authorised to make any modifications or changes.

1.6 Inadmissible Modes of Operation

The operational safety of this instrument can only be guaranteed if it is used as intended. The instrument model must be suitable for the medium used in the system. The limit values given in the technical data may not be exceeded.

The manufacturer is not liable for damage resulting from improper or incorrect use.

1.7 Safe working practices for maintenance and installation work

The safety instructions given in this operating manual, any nationally applicable regulations on accident prevention and any of the operating company's internal work, operating and safety guidelines must be observed.

The operating company is responsible for ensuring that all required maintenance, inspection and installation work is carried out by qualified specialized personnel.

1.8 Pictogram explanation



⚠ DANGER

Type and source of danger

This indicates a **direct** dangerous situation that could lead to death or **serious injury** (highest danger level).

1. Avoid danger by observing the valid safety regulations.



⚠ WARNING

Type and source of danger

This indicates a **potentially** dangerous situation that could lead to death or **serious injury** (medium danger level).

1. Avoid danger by observing the valid safety regulations.



⚠ CAUTION

Type and source of danger

This indicates a **potentially** dangerous situation that could lead to slight or serious injury, damage or **environmental pollution** (low danger level).

1. Avoid danger by observing the valid safety regulations.



NOTICE

Note / advice

This indicates useful information of advice for efficient and smooth operation.

2 Product and functional description

2.1 Intended use

The ME11 is a pressure transmitter with a ceramic measuring cell that is suitable for measuring over-pressure and under-pressure in non-aggressive liquid and gaseous media.



NOTICE

Soiled or aggressive media

Please contact the manufacturer before using this unit with dirty or aggressive media because the unit needs to be adapted for the specific customer in terms of the parts that come into contact with the media.

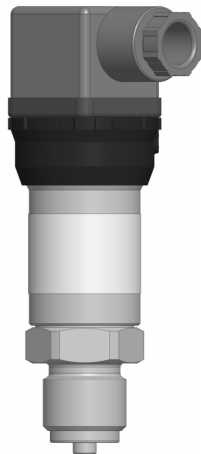
The device may only be used for the purpose stipulated by the manufacturer.

2.2 Product summary

The following provide an overview of the possible connectors and process connections. The code stated corresponds to the respective code in the order code.

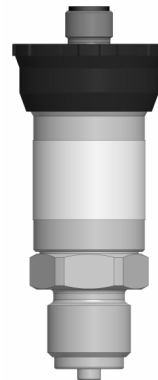
Electrical plug

Line socket
DIN EN 175 301-803-A



Code **H**

Circular plug connector M12
DIN EN 61076-2-101
(flanged connector)

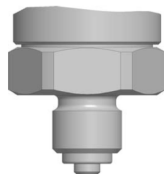


Code **M**

Fig. 1: Electrical plug

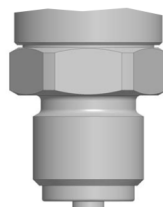
Process connections

G $\frac{1}{4}$ B



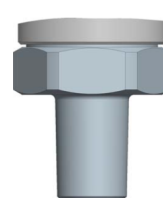
Code **85**

G $\frac{1}{2}$ B



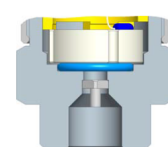
Code **87**

$\frac{1}{4}$ -18 NPT EXT



Code **88**

Schrader ®



Code **S1**

Fig. 2: Process connections

Nameplate

This type plate serves as an example of the information that is stated. The data shown is purely fictive, but does correspond to the actual conditions. For more information, please see the order code at the end of these instructions.

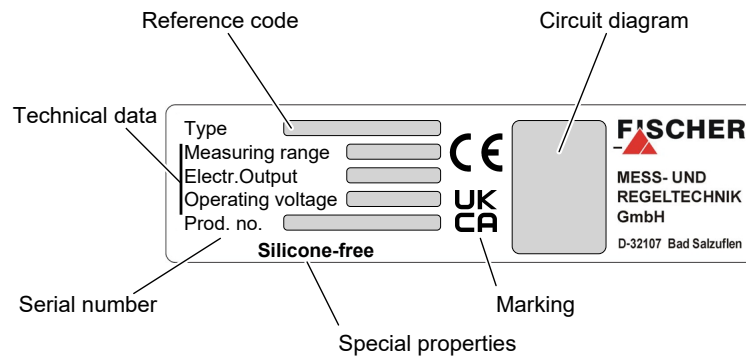


Fig. 3: Nameplate

2.3 Function diagram

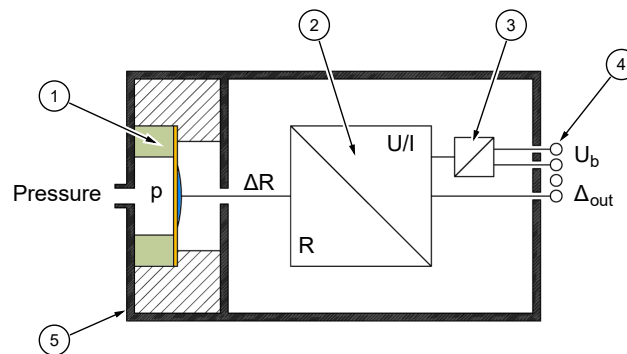


Fig. 4: Function diagram

1	Ceramic sensor	2	electronics
3	Auxiliary energy	4	Electrical connection
5	Process connection		

2.4 Design and mode of operation

The measuring pressure acts on a ceramic membrane that deforms when under pressure. There is a DMS bridge attached to the ceramic membrane. When the ceramic deforms, the output signal of the DMS bridge changes. The electronics integrated into the device convert the bridge signals into electrical unit signals 4...20 mA or 0...10 V DC um.

3 Installation and assembly

3.1 Generalities

The instrument may only be installed and commissioned by specialized personnel familiar with the installation, commissioning and operation of this product.

Specialized personnel are persons who can assess the work they have been assigned and recognize potential dangers by virtue of their specialized training, their skills and experience and their knowledge of the pertinent standards.



⚠ WARNING

Mounting pressure transmitters

During assembly, observe the respective national and international guidelines and safety regulations.

Only mount the unit to systems that are depressurized. Only ever operate the unit within the permitted measuring range or below the maximum overload.

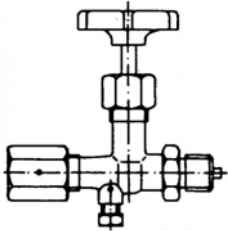


Fig. 5: Shutoff valve.

The device is set ex-works for vertical installation, however any installation position is possible.

To guarantee safe working conditions during installation and maintenance, suitable stop valves must be fitted in the system (see accessories). By means of the manometer shutoff, the unit

- Can be depressurized or taken out of operation.
- Be disconnected from the power supply within the applicable system for repairs or inspections.

3.2 Process connection

- By authorized and qualified specialized personnel only.
- The pipes need to be depressurized when the instrument is being connected.
- Appropriate steps must be taken to protect the device from pressure surges.
- Check that the device is suitable for the medium being measured.
- Maximum pressures must be observed (cf. Tech. data)



⚠ WARNING

Earth connection via the system earth

During assembly, ensure that the earth connection between the unit and the system earth is ensured. The connection to the system earth is realised via the process connection. Therefore, never use an insulated Teflon tape or similar. Design the process connection acc. to EN 837 and use a suitable flat seal.

3.2.1 Measuring lines that need to be connected

The following points need to be observed when connecting the pressure line:

- To ensure there is no influence on the measured values, severe bends and coils in the wire should be avoided.
- To prevent deposits, there should be a continuous incline or drop of at least 8%.
- When measuring steam pressure, a water bag-forming loop must be provided due to the temperature (see accessories).

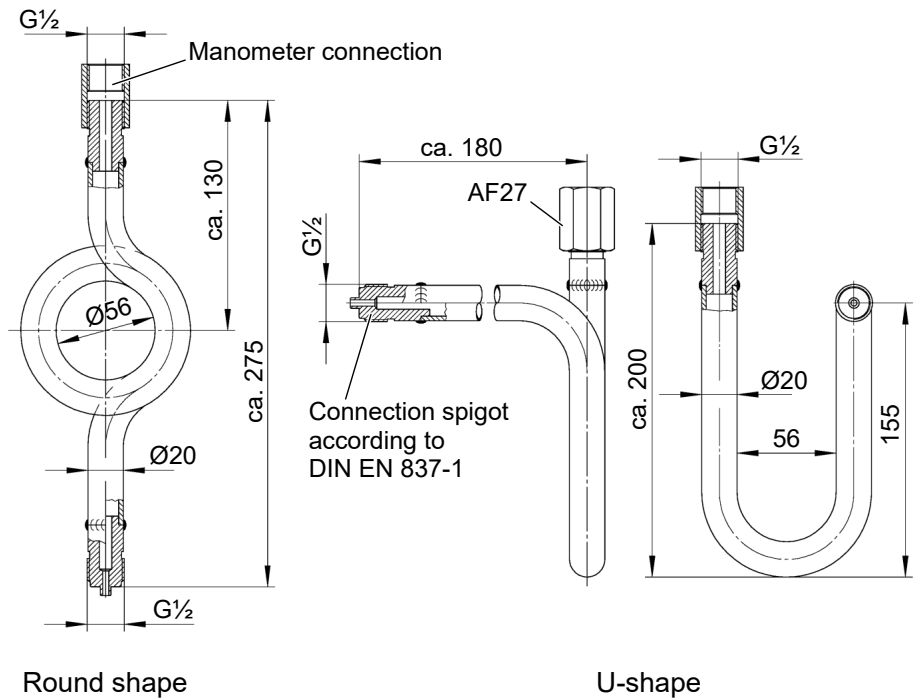


Fig. 6: Siphon MZ1###

- The transmitter must be positioned below the measuring point for liquid measurements. Vent the pressure line before commissioning.
- The transmitter must be positioned above the measuring point for gas measurements.

3.2.2 Pressure surge absorption

Pulsating pressure on the system side can lead to functional problems. We recommend installing a damping element in the pressure connection lines as a protective measure.

a) Capillary throttle

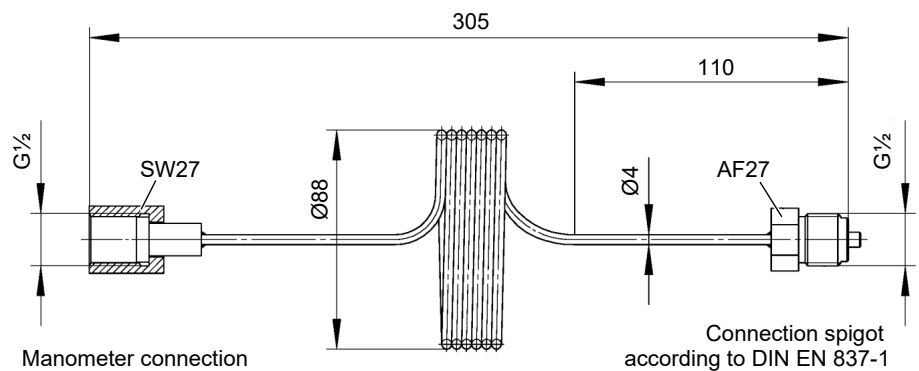


Fig. 7: Capillary throttle MZ400#

b) Settable damping reactor

In operating mode, the damping throttle must be set so that the output signal follows the pressure changes with a delay.

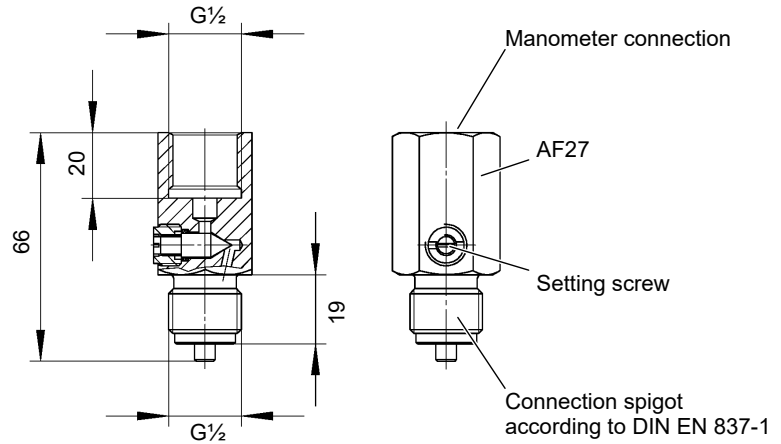


Fig. 8: Damping reactor MZ410#

3.3 Electrical connections

- By authorized and qualified specialized personnel only.
- When connecting the unit, the national and international electro-technical regulations must be observed.
- Disconnect the system from the mains, before electrically connecting the device.
- Install the consumer-adapted fuses.
- Do not connect the connector if strained.

a) 2-wire connection

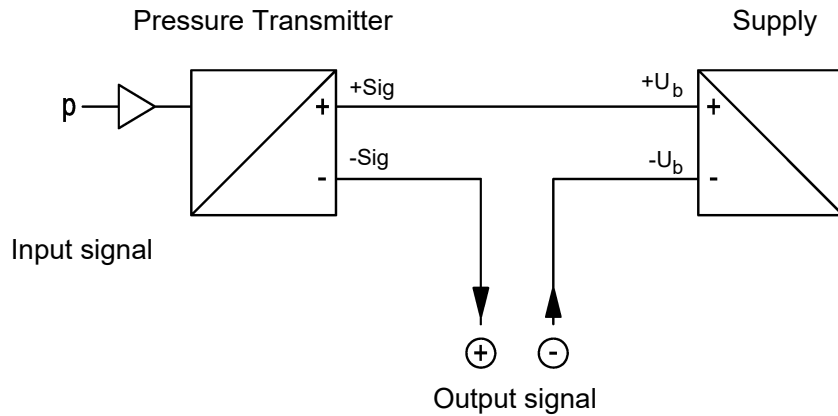


Fig. 9: 2L Circuitry

b) Three-wire connection

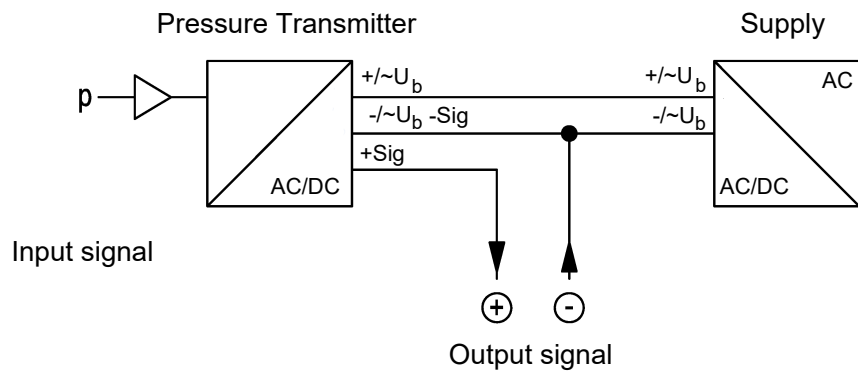


Fig. 10: 3L circuitry AC/DC

3.3.1 Standardised plug DIN EN 175 301-803-A

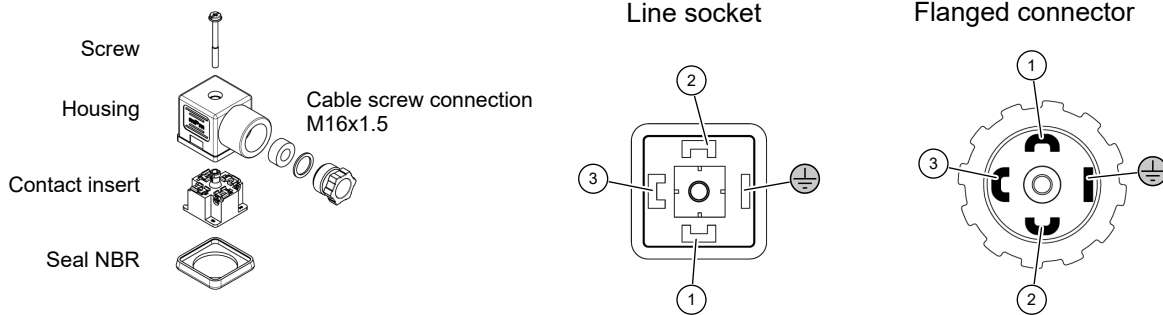


Fig. 11: Line socket DIN EN 175 301-803-A

Ter- minal	Signal name	DC	Cable colour
1	Supply /Output	+U _b	+Sig red
2	Supply /Output	-U _b	-Sig blue
3	n.c.		
⊕	n.c.		

Table 1: 2-wire connection 4 ... 20 mA

Ter- minal	Signal name	AC	DC	Cable colour
1	Output		+Sig	Black
2	Supply /Output	~U _b	-U _b	-Sig blue
3	Supply	~U _b	+U _b	red
⊕	n.c.			

Table 2: 3-wire connection 0 ... 10V

The earth connection in the standardized plug is not connected.

3.3.2 M12 flanged connector DIN EN 61076-2-101

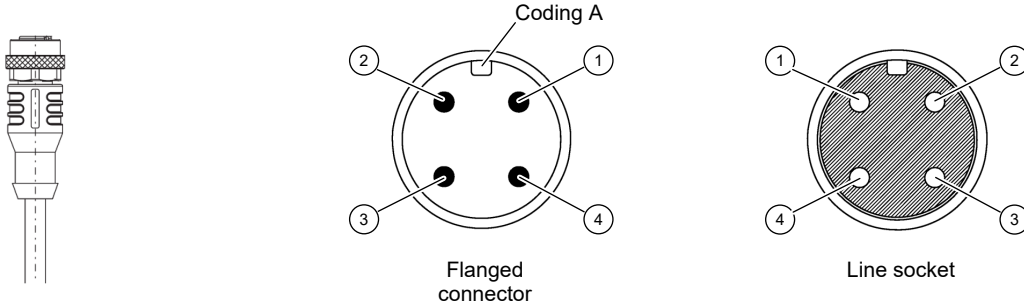


Fig. 12: M12 plug DIN EN 61076-2-101

Pin	Signal name	DC	Cable colour
1	Supply /Output	+U _b	+Sig brown
2	n.c.		
3	Supply /Output	-U _b	-Sig blue
4	n.c.		

Table 3: 2-wire connection 4 ... 20 mA

Pin	Signal name	AC	DC	Cable colour
1	Supply	~U _b	+U _b	brown
2	n.c.			
3	Supply /Output	~U _b	-U _b	-Sig blue
4	Output			+Sig Black

Table 4: 3-wire connection 0 ... 10V

3.4 Commissioning

All electrical supply, operating and measuring lines and the pressure connections must have been correctly installed before commissioning. All supply lines are arranged so that there are no mechanical forces acting on the device.

- If liquid measuring media are used the pressure connection lines must be vented, as liquid columns of different heights in the pipes can cause measuring errors. The instrument must be protected against frost, if water is used as a measuring medium.
- Appropriate shutoff valves must be provided to ensure safety during installation, maintenance and inspection

4 Servicing

4.1 Maintenance

The instrument is maintenance-free. We recommend the following regular inspection to guarantee reliable operation and a long service life:

- Check the function in combination with downstream components.
- Check the leak-tightness of the pressure connection lines.
- Check the electrical connections.

The exact test cycles need to be adapted to the operating and environmental conditions. In combination with other devices, the operating instructions for the other devices also need to be observed.

4.2 Transport

The measuring device must be protected against impacts. It should be transported in the original packaging or a suitable transport container.

4.3 Service

All defective or faulty devices should be sent directly to our repair department. Please coordinate all shipments with our sales department.



WARNING

Process media residues

Process media residues in and on dismantled devices can be a hazard to people, animals and the environment. Take adequate preventive measures. If required, the devices must be cleaned thoroughly.

Return the device in the original packaging or a suitable transport container.

4.4 accessories

- Prefabricated M12 connection lines (pageOrder Codes [▶ 18])
- Siphons MZ1###
- Capillary throttle coil MZ400#
- Settable damping reactor MZ410#
- Manometer shutoff valves MZ5###, MZ6###

Please see here the data sheet MZ measuring devices accessories. Here you will find more detailed information about the technical data and the order codes of the accessory parts MZ.

4.5 Disposal

Please help to protect the environment by always disposing of the work pieces and packaging materials in compliance with the valid national waste and recycling guidelines or reuse them.

5 Technical Data

5.1 General information

Reference conditions (acc. to IEC 61298-1)			
Temperature	+15 ... +25 °C		
Relative humidity	45 ... 75 %		
Air pressure	86 ... 106 kPa	860 ... 1060 mbar	
Installation position	User-defined		

5.2 Input variables

Positive measuring ranges

Measuring range	SI unit	Pressure safety	
		Overpressure	Bursting-pressure
0 ... +0.6 bar	0 ... 60 kPa	4 bar	7 bar
0 ... +1 bar	0 ... 100 kPa	4 bar	7 bar
0 ... +1.6 bar	0 ... 160 kPa	4 bar	7 bar
0 ... +2.5 bar	0 ... 250 kPa	10 bar	15 bar
0 ... +4 bar	0 ... 400 kPa	10 bar	15 bar
0 ... +6 bar	0 ... 600 kPa	20 bar	35 bar
0 ... +10 bar	0 ... 1000 kPa	20 bar	35 bar
0 ... +16 bar	0 ... 1600 kPa	40 bar	70 bar
0 ... +25 bar	0 ... 2500 kPa	100 bar	150 bar
0 ... +40 bar	0 ... 4000 kPa	100 bar	150 bar
0 ... +60 bar	0 ... 6000 kPa	200 bar	250 bar

Vacuum and ± measuring ranges

Measuring range	SI unit	Pressure safety	
		Overpressure	Bursting-pressure
-1 ... 0 bar	-100 ... 0 kPa	4 bar	7 bar
-1 ... +0.6 bar	-100 ... 60 kPa	4 bar	7 bar
-1 ... +1.5 bar	-100 ... 150 kPa	4 bar	7 bar
-1 ... +3 bar	-100 ... 300 kPa	10 bar	15 bar
-1 ... +5 bar	-100 ... 500 kPa	20 bar	35 bar
-1 ... +9 bar	-100 ... 900 kPa	40 bar	70 bar
-1 ... +15 bar	-100 ... 1500 kPa	40 bar	70 bar
-1 ... +24 bar	-100 ... 2400 kPa	100 bar	150 bar

Special measuring ranges

Measuring range	SI unit	Pressure safety	
		Overpressure	Bursting-pressure
0 ... 30 PSI	0 ... 206.8 kPa	10 bar	15 bar
0 ... 60 PSI	0 ... 413.7 kPa	10 bar	15 bar
0 ... 100 PSI	0 ... 689.4 kPa	20 bar	35 bar
0 ... 160 PSI	0 ... 1103.2 kPa	40 bar	70 bar
0 ... 250 PSI	0 ... 1723.6 kPa	40 bar	70 bar
0 ... 500 PSI	0 ... 3447.3 kPa	100 bar	150 bar
-30 inHg vac ...+ 15 psi		4 bar	7 bar
-30 inHg vac ...+ 100 psi		20 bar	35 bar

5.3 Output parameters

	2-Conductor	3-Conductor
Output signal	4 ... 20 mA DC	0 ... 10 V DC
Limits	Max. 21 mA	Max. 10.5 V
Apparent ohmic resistance	$(U_b - 6V)/0.02A$	$U_b \geq 15V \quad \geq 5k\Omega$ $U_b \geq 20V \quad \geq 2k\Omega$

5.4 Measurement accuracy

Non-linearity		< 1.0 % FS
Hysteresis		< 0.5 % FS
Characteristic curve deviation ^{*)}		1.0 %
Temperature drift	Zero point	0.07 % FS/K
	Measuring range	0.05 % FS/K

^{*)} incl. non-linearity and hysteresis

5.5 Auxiliary energy

	2-Conductor	3-Conductor
Rated Voltage	24v DC	24 V AC/DC
Admissible operating voltage	6 ... 30 V DC	19.2 ... 28.8 V AC/DC
Power input	0.7 W	0.5 W (VA)

5.6 Operating conditions

Ambient temperature range	0 °C ... +60 °C
Storage temperature range	-20 °C ... +85 °C
Medium temperature range	0 °C ... +85 °C
EMC	EN 61326-1:2013 EN 61326-2-3:2013
RoHS	EN 50581:2012
Type of protection:	IP 65 acc. to EN 60529

Materials of the parts that come into contact with the surroundings

Casing	CrNi Steel 1.4305
Device plug screw lid	Polypropylene, black
Device plug	Polyamide, brass, zinc
Cable socket	Polyamide, polycarbonate, brass, zinc

Materials of the parts that come into contact with the measuring medium

Process connection	CrNi Steel 1.4404
Sensor membrane	Ceramic Al ₂ O ₃
Seal ¹⁾	FKM Fluorinated rubber, Viton®
	CR Chloroprene rubber, Neoprene®
	EPDM Ethylene propylene diene rubber
	H-NBR Hydrogenated acrylonitrile butadiene rubber (for hot water applications)

¹⁾ see order code

5.7 Construction design

5.7.1 Standard casing dimensional drawing

All dimensions in mm unless otherwise stated

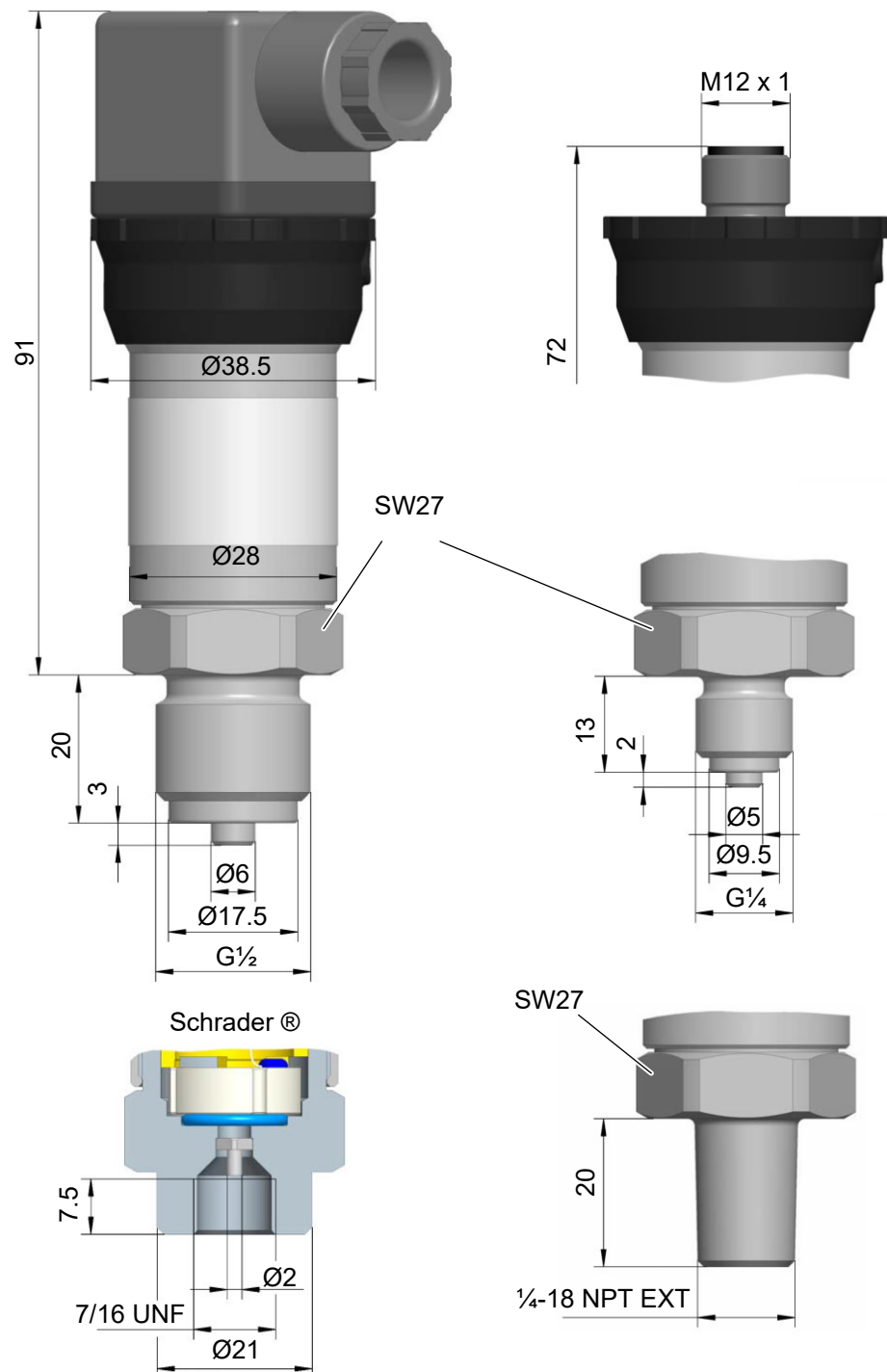


Fig. 13: Standard casing dimensional drawing

5.7.2 Process connection

1/4-18 NPT EXT	Connection shanks with external thread
Schrader®	Connection for Schrader screw connection
G3/4 B	Connection shanks with external thread
G1/4 B	Connection shanks with external thread

5.7.3 Electrical connections

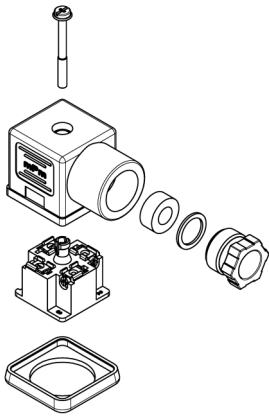
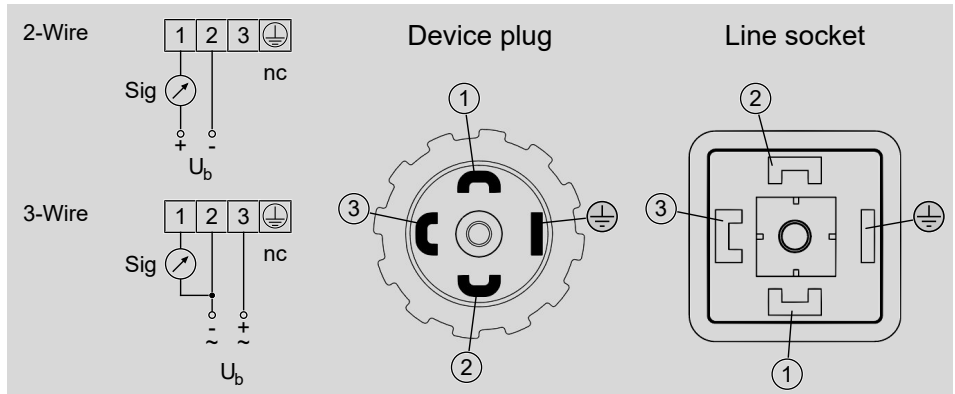


Fig. 14: Line socket DIN EN 175 301-803-A

Unit connector and cable socket DIN EN 175 301-803 Form A, 4-pin



The earth connection is not connected.

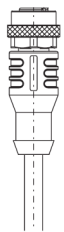
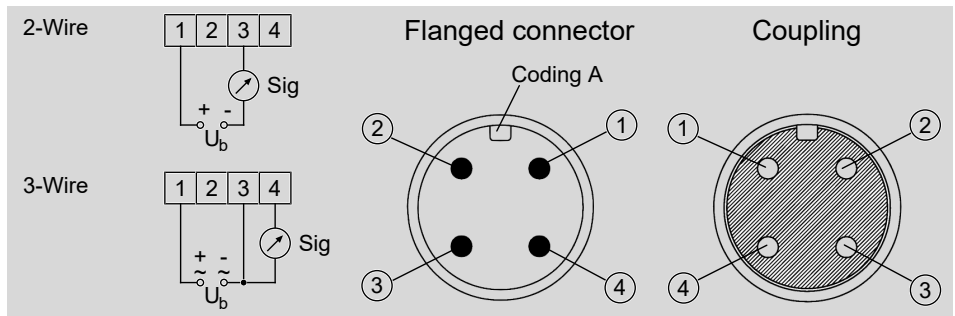
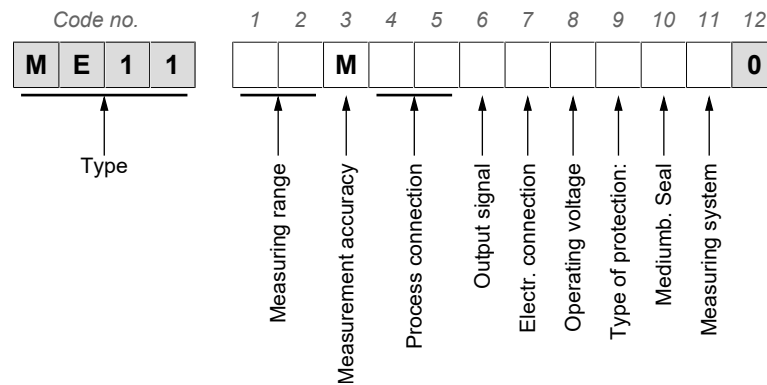


Fig. 15: M12 coupling device DIN EN 61076-2-101

M12 flanged connector DIN EN 61076-2-101, 4-pin



6 Order Codes



[1.2] Measuring range

01	0 ... 0,6bar
02	0 ... 1bar
03	0...1.6 bar
04	0...2.5 bar
05	0 ... 4bar
06	0 ... 6bar
07	0 ... 10bar
08	0 ... 16bar
09	0 ... 25bar
10	0 ... 40bar
11	0 ... 60bar

31	-1 ... 0 bar
32	-1...0.6 bar
33	-1...1.5 bar
34	-1...3 bar
35	-1...5 bar
36	-1...9 bar
37	-1...15 bar
38	-1...24 bar

F1	0 ... 60 kPa
F2	0 ... 100 kPa
F3	0 ... 160 kPa
F4	0 ... 250 kPa
F5	0 ... 400 kPa
F6	0 ... 600 kPa
F7	0 ... 1000 kPa
F8	0 ... 1600 kPa
G1	0 ... 2500 kPa
G2	0 ... 4000 kPa
G3	0 ... 6000 kPa

H5	0 ... 30 PSI		
H6	0 ... 60 PSI		
H7	0 ... 100 PSI		
H9	0 ... 160 PSI		
Q1	0 ... 250 PSI		
P9	0 ... 500 PSI		
S2	-30 inHg vac ... +15 psi		
S2	-30 inHg vac ... +100 psi		
[3] Measurement accuracy			
M	Characteristic curve deviation 1.0%		
[4.5] Process connection			
85	Connection shanks with external thread G $\frac{1}{4}$ B		
87	Connection shanks with external thread G $\frac{1}{2}$ B		
88	Connecting port with outer thread $\frac{1}{4}$ -NPT EXT		
S1	Connection for Schrader [®] screw connection		
[6] Output signal	Connection type	Condition (Operating voltage)	
B	4 ... 20 mA DC	2-Wire	24V DC
C	0 ... 10 V DC	3-Conductor	24 V AC/DC
[7] Electrical connection			
H	4-pin standard plug DIN EN 175 301-803-A		
M	4-pin M12 plug connection DIN EN 61076-2-101		
[8] Operating voltage			
9	24 V DC		2 wire output signal
A	24 V DC		3 wire output signal
L	24 V AC/DC		3 wire output signal
[9] Casing			
0	IP65		
R	IP65 (cast version)		
[10] Media-Contact Seal			Application
R	FKM	Fluorocarbon rubber	For O ₂ measurement mandatory
C	CR	Chloroprene Rubber	
E	EPDM	Ethylene propylene diene rubber	
H	H-NBR	Hydrogenated acrylonitrile butadiene rubber	Hot-water
[11] Measuring system			Condition
0	Default		
3	Suitable for O ₂ measurements;		O-ring FKM (BAM tested) *)
A	Silicon-free version		

*) BAM:= Bundesanstalt für Materialforschung und –prüfung

6.1 Prefabricated connection lines

Order no.	Designation	No. of Poles	length
06401993	PUR cable with M12-coupling	4-pin	2m
06401994	PUR cable with M12-coupling	4-pin	5m
06401563	PUR cable with M12-coupling	4-pin	7m
06401572	PUR cable with M12-coupling	4-pin	10m

7 Attachments



(Translation) **CE**

EU Declaration of Conformity

For the product described as follows

Product designation **Pressure transmitter**
Type designation **ME11**

it is hereby declared that it corresponds with the basic requirements specified in the following designated directives:

2014/30/EU	EMC Directive
2011/65/EU	RoHS Directive
(EU) 2015/863	Delegated Directive amending Annex II to Directive 2011/65/EU

The products were tested in compliance with the following standards.

Electromagnetic compatibility (EMC)

DIN EN 61326-1:2013-07 EN 61326-1:2013	Electrical equipment for measurement, control and laboratory use - EMC requirements - Part 1: General requirements
DIN EN 61326-2-3:2013-07 EN 61326-2-3:2013	Electrical equipment for measurement, control and laboratory use - EMC requirements - Part 2-3: Particular requirements - Test configuration, operational conditions and performance criteria for transducers with integrated or remote signal conditioning

RoHS Directive (RoHS3)

DIN EN IEC 63000:2019-05 EN IEC 63000:2018	Technical documentation for the assessment of electrical and electronic products with respect to the restriction of hazardous substances
--	--

Also they were subjected to the conformity assessment procedure „Internal production control“.

Sole responsibility for the issue of this declaration of conformity in relation to fulfilment of the fundamental requirements and the production of the technical documents is with the manufacturer.

Manufacturer **FISCHER Mess- und Regeltechnik GmbH**
 Bielefelder Str. 37a
 32107 Bad Salzuflen, Germany
 Tel. +49 (0)5222 974 0

Documentation representative Torsten Malischewski
 General Manager R&D

The devices bear the following marking:



Bad Salzuflen
 29 March 2022

G. Gödde
 Managing director

09010117 • CE_EN_ME11 • Rev. ST4-C • 04/22

1 / 1



Fig. 16: CE_EN_ME11



(Translation) **UK
CA**

UKCA Declaration of Conformity

For the product described as follows

is hereby declared to comply with the essential requirements, specified in the following UK regulations:

Product designation **Pressure transmitter**

Type designation **ME11**

Statutory regulation No.

2016 No. 1091

2021 No. 422

2022 No. 1647

Description

The Electromagnetic Compatibility Regulations 2016

The Restriction of the Use of Certain Hazardous Substances in Electrical and Electronic Equipment (Amendment) Regulations 2021

The Hazardous Substances and Packaging (Legislative Functions and Amendment) (EU Exit) Regulations 2020

The products have been tested according to the following standards.

Electromagnetic compatibility (EMC):

BS EN 61326-1:2013-02-28

Electrical equipment for measurement, control and laboratory use. EMC requirements. General requirements

BS EN 61326-2-3:2013-02-28

Electrical equipment for measurement, control and laboratory use. EMC requirements. Particular requirements. Test configuration, operational conditions and performance criteria for transducers with integrated or remote signal conditioning.

Restriction of Hazardous Substances (RoHS):

BS EN IEC 63000:2018-12-10

Technical documentation for the assessment of electrical and electronic products with respect to the restriction of hazardous substances

The sole responsibility for drawing up this declaration of conformity in relation to the fulfilment of the essential requirements and the preparation of the technical documentation lies with the manufacturer.

Manufacturer

FISCHER Mess- und Regeltechnik GmbH

Bielefelder Str. 37a

32107 Bad Salzufflen, Germany

Tel. +49 (0)5222 974 0

Die Geräte werden
gekennzeichnet mit:



Bad Salzufflen
29 March 2022

G. Gödde
Managing director



Notes



FISCHER Mess- und Regeltechnik GmbH

Bielefelder Str. 37a
D-32107 Bad Salzuflen

Tel. +49 5222 974-0

Fax +49 5222 7170

www.fischermesstechnik.de
info@fischermesstechnik.de