

Data sheet

TW27 Submersion Resistance Thermometer in accordance with DIN 43769

Measuring element: Measuring insert in compliance with DIN 43762
Insertion tube stainless steel 1.4571
Measuring resistance 1x or 2x Pt100
DIN EN60751

Connection: Standard connector head Form B in light metal in compliance with DIN 43729

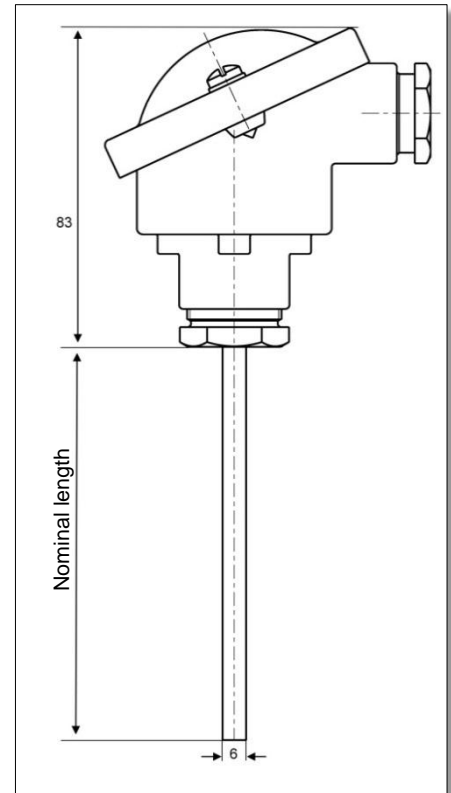
Max. measuring temperature: -50°C or +400°C

Mechanical and thermal resistance of the protection tube

Air, gas up to density 6 kg/m³: Flow speed up to 30 m/s at a pressure of <10bar

Gas up to density 110 kg/m³: Flow speed up to 5 m/s at a pressure of <25bar

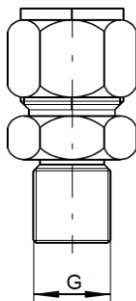
Liquid: Flow speed up to 2 m/s at a pressure of <25bar



Accessories:

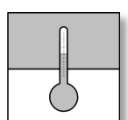
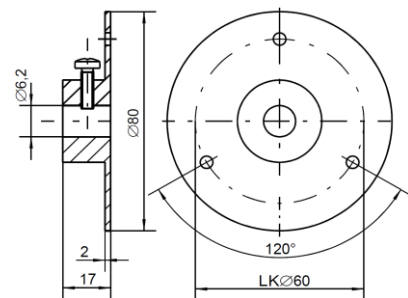
Sliding clamp screw connection

G	material	Item
¼"	Stainless steel	09002028
½"	Stainless steel	09002173



Sliding sheet metal flange

material	Item
Stainless steel	06402337



Order Codes

Submersion Resistance Thermometer

TW27

			0			
--	--	--	---	--	--	--

Basic Model

- Measuring insert with 1 x Pt100, 2-conductor> **A**
- Measuring insert with 1 x Pt100, 3-conductor> **B**
- Measuring insert with 1 x Pt100, 4-conductor> **C**
- Measuring insert with 2 x Pt100, 2-conductor> **D**
- Measuring insert with 2 x Pt100, 3-conductor> **E**

Connection head

- Form B (Standard)> **1**
- Form BBK> **2**
- Form S79> **3**
- Form BUSH> **4**
- Form BUS> **5**

Nominal length

- 100 mm> **1**
- 200 mm> **3**
- 300 mm> **7**
- 400 mm> **8**
- Other lengths on request> **9**

Delivery

- Resistance output on the terminal> **L 0**
- with 2-wire transmitter; 4-20mA; 24V DC> **L 0**
- (only with basic type 1xPt100/3-conductor possible)

Measuring range of the transmitter [°C]

- Without transmitter in connection head> **0 0**
- 50 ... 0> **1 0**
- 50 ... +50> **2 0**
- 0 ... +50> **3 0**
- 0 ... +100> **4 0**
- 0 ... +150> **5 0**
- 0 ... +200> **6 0**
- 0 ... +300> **7 0**
- 0 ... +400> **8 0**

Order the data sheets for the transmitter! ATEX versions available on request.

