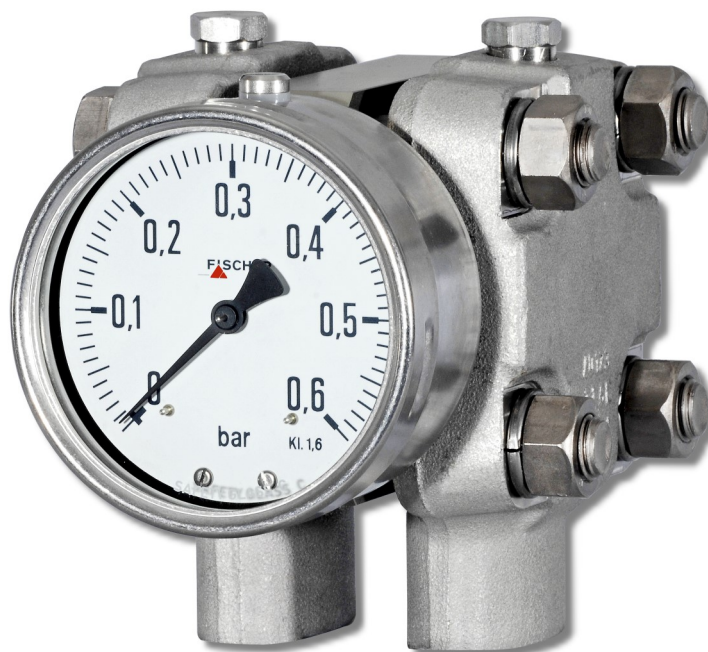




RoHS III  
COMPLIANT

UK  
CA

EAC



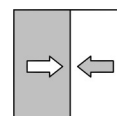
## Operating manual

### DA01 VUW (ATEX)

Differential pressure measuring device  
Pressure levels PN250/PN400

Models for use in  
explosive areas

DA01 ... 0A  
DA01 ... 1B  
DA01 ... 1C  
DA01 ... 2D



## Masthead

**Manufacturer:****FISCHER Mess- und Regeltechnik GmbH**

Bielefelderstr. 37a  
D-32107 Bad Salzuflen

Telephone: +49 5222 974 0  
Telefax: +49 5222 7170

eMail: [info@fischermesstechnik.de](mailto:info@fischermesstechnik.de)  
web: [www.fischermesstechnik.de](http://www.fischermesstechnik.de)

**Technical editorial team:**

Technical editor: R. Kleemann

All rights, also those to the translation, reserved. No part of this document may be reproduced or processed, duplicated or distributed using electronic systems or any other form (print, photocopy, microfilm or another process) without the written consent of the company FISCHER Mess- und Regeltechnik GmbH, Bad Salzuflen.

Reproduction for internal use is expressly allowed.

Brand names and procedures are used for information purposes only and do not take the respective patent situation into account. Great care was taken when compiling the texts and illustrations. nevertheless, errors cannot be ruled out. The company FISCHER Mess- und Regeltechnik GmbH will not accept any legal responsibility or liability for this.

Subject to technical amendments.



© FISCHER Mess- und Regeltechnik 2018

### Version history

Rev. ST4-A	11/15	Version 1 (first edition)
Rev. ST4-B	06/21	Version 4 (correction of product number key)
Rev. ST4-C	10/21	Version 5 (UKCA conformity)
Rev. ST4-D	02/23	Version 6 (liquid filling for inductive contacts)
Rev. ST4-E	02/24	Version 7 (liquid filling omitted for contact element)
Rev. ST4-F	03/25	Version 8 (update ATEX)

# Table of Contents

<b>1 Sicherheitshinweise.....</b>	<b>4</b>
1.1 General.....	4
1.2 Personnel Qualification .....	4
1.3 Risks due to Non-Observance of Safety Instructions .....	4
1.4 Safety Instructions for the Operating Company and the Operator .....	4
1.5 Unauthorised Modification .....	5
1.6 Inadmissible Modes of Operation .....	5
1.7 Safe working practices for maintenance and installation work .....	5
1.8 Pictogram explanation .....	6
<b>2 Product and functional description.....</b>	<b>7</b>
2.1 Delivery scope .....	7
2.2 Equipment versions .....	7
2.3 Function diagram.....	12
2.4 Design and mode of operation .....	12
<b>3 Assembly .....</b>	<b>13</b>
3.1 General information .....	13
3.2 Process connection .....	13
3.3 Electrical connections.....	14
3.4 Use in areas at risk of explosion .....	16
<b>4 Commissioning .....</b>	<b>21</b>
4.1 General.....	21
4.2 Venting of the pressure lines .....	21
4.3 Zero point correction .....	22
4.4 Switch point setting .....	22
<b>5 Servicing .....</b>	<b>24</b>
5.1 Maintenance.....	24
5.2 Maintenance .....	24
5.3 Transport .....	24
5.4 Service .....	24
5.5 Disposal.....	24
<b>6 Technical Data.....</b>	<b>26</b>
6.1 Allgemeines .....	26
6.2 Input variables .....	27
6.3 Operating conditions .....	27
6.4 Construction design.....	28
<b>7 Order Codes .....</b>	<b>35</b>
7.1 Accessories .....	37
<b>8 EU Declarations of conformity.....</b>	<b>38</b>
<b>9 UKCA Declarations of Conformity.....</b>	<b>44</b>
<b>10 EAC Declaration .....</b>	<b>51</b>

# 1 Sicherheitshinweise

## 1.1 General

This operating manual contains basic instructions for the installation, operation and maintenance of the device that must be followed without fail. It must be read by the installer, the operator and the responsible specialist personnel before installing and commissioning the device.

This operating manual is an integral part of the product and therefore needs to be kept close to the instrument in a place that is accessible at all times to the responsible personnel.

The following sections, in particular instructions about the assembly, commissioning and maintenance, contain important information, non-observance of which could pose a threat to humans, animals, the environment and property.

The instrument described in these operating instructions is designed and manufactured in line with the state of the art and good engineering practice.

## 1.2 Personnel Qualification

The instrument may only be installed and commissioned by specialized personnel familiar with the installation, commissioning and operation of this product.

Specialized personnel are persons who can assess the work they have been assigned and recognize potential dangers by virtue of their specialized training, their skills and experience and their knowledge of the pertinent standards.

For explosion-proof models the specialized personnel must have received special training or instruction or be authorized to work with explosion-proof instruments in explosion hazard areas.

## 1.3 Risks due to Non-Observance of Safety Instructions

Non-observance of these safety instructions, the intended use of the device or the limit values given in the technical specifications can be hazardous or cause harm to persons, the environment or the plant itself.

The supplier of the equipment will not be liable for damage claims if this should happen.

## 1.4 Safety Instructions for the Operating Company and the Operator

The safety instructions governing correct operation of the instrument must be observed. The operating company must make them available to the installation, maintenance, inspection and operating personnel.

Dangers arising from electrical components, energy discharged by the medium, escaping medium and incorrect installation of the device must be eliminated. See the information in the applicable national and international regulations.

Please observe the information about certification and approvals in the Technical Data section.



The instrument must be decommissioned and secured against inadvertent re-operation if a situation arises in which it must be assumed that safe operation is no longer possible. Reasons for this assumption could be:

- evident damage to the instrument
- failure of the electrical circuits
- longer storage outside the approved temperature range.
- considerable strain due to transport

Repairs may be carried out by the manufacturer only.

A professional single conformity inspection as per DIN EN 61010, section 1, must be carried out before the instrument can be re-commissioned. This inspection must be performed at the manufacturer's location. Correct transport and storage of the instrument are required.

### **1.5 Unauthorised Modification**

Modifications of or other technical alterations to the instrument by the customer are not permitted. This also applies to replacement parts. Only the manufacturer is authorised to make any modifications or changes.

### **1.6 Inadmissible Modes of Operation**

The operational safety of this instrument can only be guaranteed if it is used as intended. The instrument model must be suitable for the medium used in the system. The limit values given in the technical data may not be exceeded.

The manufacturer is not liable for damage resulting from improper or incorrect use.

### **1.7 Safe working practices for maintenance and installation work**

The safety instructions given in this operating manual, any nationally applicable regulations on accident prevention and any of the operating company's internal work, operating and safety guidelines must be observed.

The operating company is responsible for ensuring that all required maintenance, inspection and installation work is carried out by qualified specialized personnel.

## 1.8 Pictogram explanation



### **DANGER**

#### Type and source of danger

This indicates a **direct** dangerous situation that could lead to death or **serious injury** (highest danger level).

1. Avoid danger by observing the valid safety regulations.



### **WARNING**

#### Type and source of danger

This indicates a **potentially** dangerous situation that could lead to death or **serious injury** (medium danger level).

1. Avoid danger by observing the valid safety regulations.



### **CAUTION**

#### Type and source of danger

This indicates a **potentially** dangerous situation that could lead to slight or serious injury, damage or **environmental pollution** (low danger level).

1. Avoid danger by observing the valid safety regulations.



### **NOTICE**

#### Note / advice

This indicates useful information of advice for efficient and smooth operation.

## 2 Product and functional description

### 2.1 Delivery scope

- Differential pressure measuring device DA01
- Operating Manual

### 2.2 Equipment versions

The following illustrations depict typical combinations of the measuring cell, measured value display and contact elements. However, these can be freely combined according to the order code. Wherever this is not possible, this is clearly stated.

For instance, a small measuring cell with an NG160 display and a contact element is also available.

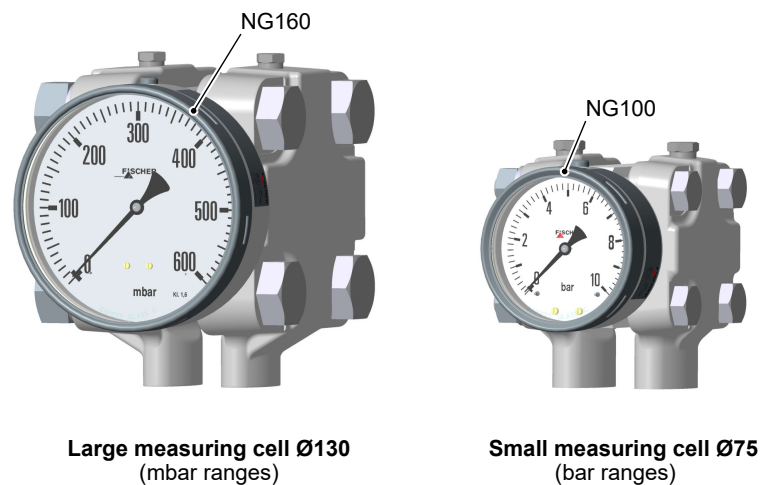


Fig. 1: Device overview

#### 2.2.1 Process connection

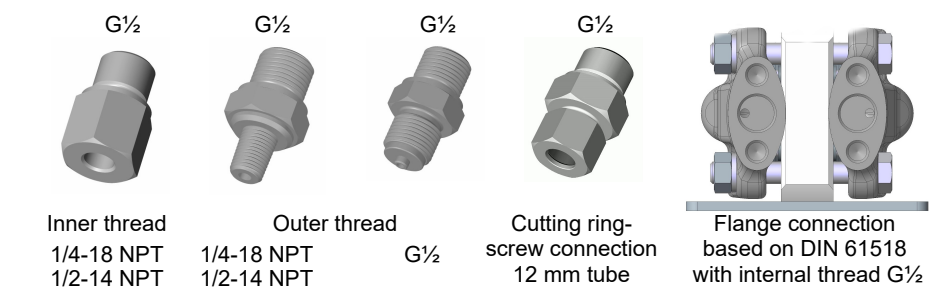


Fig. 2: Options for the process connection

2.2.2 Nameplate

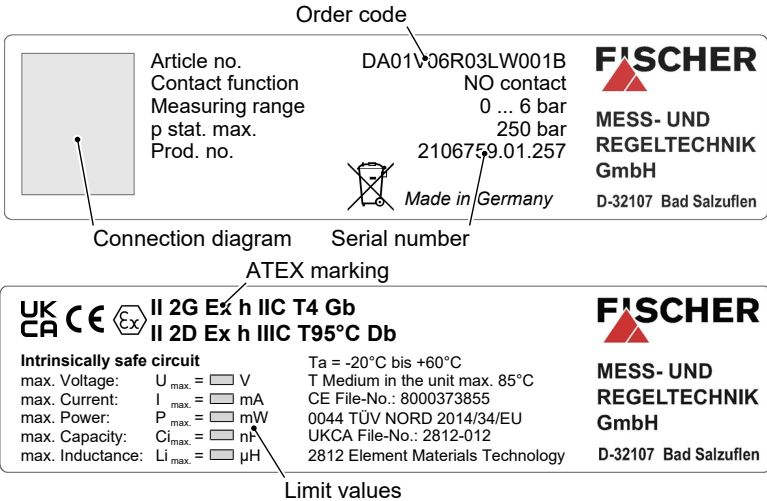
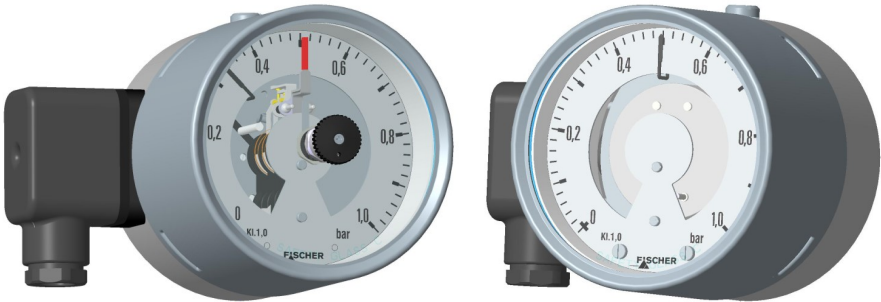


Fig. 3: Nameplate (example)

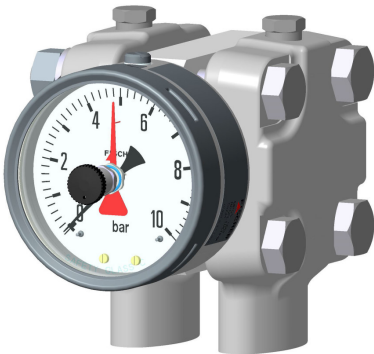
2.2.3 Contact devices



Limit switch in accordance with data sheet KE##	Rotation angle encoder in accordance with data sheet KE09
for ATEX devices	
<ul style="list-style-type: none"><li>• Snap-action contacts</li><li>• Inductive contacts</li></ul>	<ul style="list-style-type: none"><li>• KINAX 3W2 708-226D0</li><li>• KINAX 3W2 708-226E0</li></ul>

Fig. 4: Contact devices

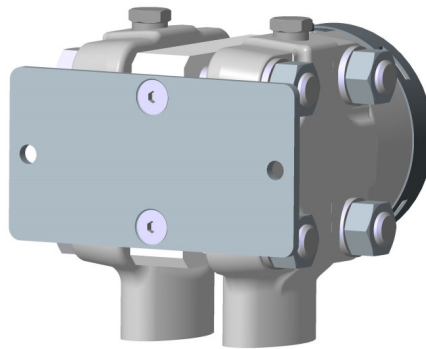
2.2.4 Special functions



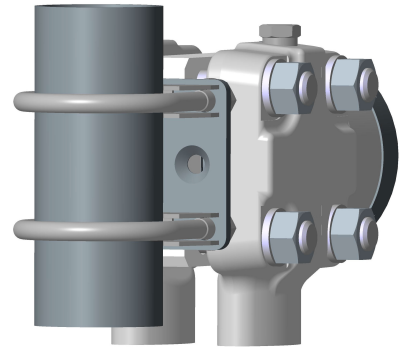
	Fluid fillings
<ul style="list-style-type: none"><li>• Marker needle</li><li>• Trailing needle</li></ul>	<ul style="list-style-type: none"><li>• Unit without contacts <i>glycerine, silicon oil</i></li></ul>

Fig. 5: Special functions

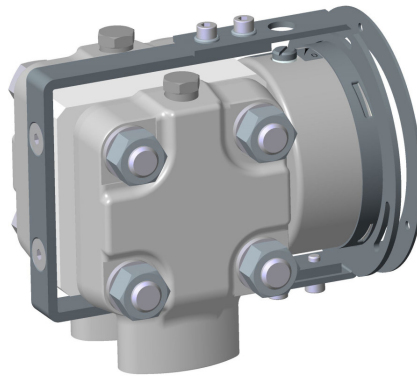
### 2.2.5 Assembly



Wall mounting



Pipe mounting



Panel mounting set type 1  
with panel mounting set



Panel mounting set type 2  
with front ring

Fig. 6: Assembly

The panel installation fittings can only be used in devices with a small measuring cell ( $\varnothing 75$ ) and a display in the NG100 bayonet ring casing.



#### **WARNING**

##### **Panel mounting set**

Due to the heavy weight, the operator needs to install a support construction for installation of the front panel.

### 2.2.6 Equipment features (overview)

In the following, the equipment options of the DA01 are shown depending on the measuring cell used and the pressure stage.

**NOTICE! Only single contacts, no changeover contacts possible.**

#### Legend

- available
- on request

#### Small measuring cell Ø75

Measuring range	Measured value display Ø100	Low-action contacts			Snap-action contacts			Inductive contacts		Rotation angle transducer	Trailing needle	Marker needle	Remote seal	Pressure level
		1	2	3	1	2	3	1	2					
0 ... 0.6 bar	●				●			●		●	□	●	●	PN250/PN400
0 ... 1 bar	●				●			●		●	□	●	●	
0 ... 1.6 bar	●				●			●		●	□	●	●	
0 ... 2.5 bar	●				●			●		●	□	●	●	
0 ... 4.0 bar	●				●			●		●	□	●	●	
0 ... 6bar	●				●			●		●	□	●	●	
0 ... 10 bar	●				●			●		●	□	●	●	
0 ... 16 bar	●				●			●		●	□	●	●	
0 ... 25 bar	●				●			●		●	□	●	●	

Fig. 7: Small measuring cell Ø75 Measured value display Ø100

Measuring range	Measured value display Ø160	Low-action contacts			Snap-action contacts			Inductive contacts		Rotation angle transducer	Trailing needle	Marker needle	Remote seal	Pressure level
		1	2	3	1	2	3	1	2					
0 ... 0.6 bar	●				●			●			□	●	●	PN250/PN400
0 ... 1 bar	●				●			●		●	□	●	●	
0 ... 1.6 bar	●				●			●		●	□	●	●	
0 ... 2.5 bar	●				●			●		●	□	●	●	
0 ... 4.0 bar	●				●			●		●	□	●	●	
0 ... 6bar	●				●			●		●	□	●	●	
0 ... 10 bar	●				●			●		●	□	●	●	
0 ... 16 bar	●				●			●		●	□	●	●	
0 ... 25 bar	●				●			●		●	□	●	●	

Fig. 8: Small measuring cell Ø75 Measured value display Ø160

### Large measuring cell Ø130

Measuring range	Measured value display Ø100	Low-action contacts			Snap-action contacts			Inductive contacts		Rotation angle transducer	Trailing needle	Marker needle	Remote seal	Pressure level
		1	2	3	1	2	3	1	2					
0 ... 40 mbar	●											●		PN250
0 ... 60 mbar	●											●		
0 ... 100 mbar	●										□	●		
0 ... 160 mbar	●				□			●		●	□	●	●	
0 ... 250 mbar	●				□			●		●	□	●	●	
0 ... 400 mbar	●				□			●		●	□	●	●	

Fig. 9: Große Messzelle Ø130 Messwertanzeige Ø100

Measuring range	Measured value display Ø160	Low-action contacts			Snap-action contacts			Inductive contacts		Rotation angle transducer	Trailing needle	Marker needle	Remote seal	Pressure level
		1	2	3	1	2	3	1	2					
0 ... 40 mbar	●											●		PN250
0 ... 60 mbar	●											●		
0 ... 100 mbar	●										□	●		
0 ... 160 mbar	●				□			●		●	□	●	●	
0 ... 250 mbar	●				□			●		●	□	●	●	
0 ... 400 mbar	●				□			●		●	□	●	●	

Fig. 10: Large measuring cell Ø130 Measured value display Ø160

## 2.3 Function diagram

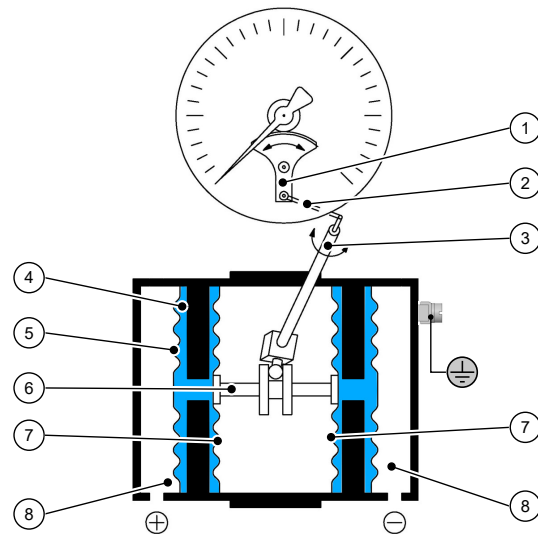


Fig. 11: Function diagram

1	Motion train	2	Transfer lever
3	Measuring shaft	4	Pressure transfer fluid
5	Separating membrane	6	Connecting rod
7	Measuring diaphragm	8	Pressure chamber

## 2.4 Design and mode of operation

The pressures in the pressure chambers that are to be compared are each exerted onto a measuring membrane that can be rigidly connected using a connection rod. To compensate the static pressure, the space between the separating and measuring membrane is filled with a pressure transfer fluid.

During pressure equalisation, the two measuring membranes are in an idle position. In case of pressure difference, the force acting on the membranes causes it to be moved towards the side of the lower pressure.

The connecting rod transfers the deflection of the measuring membranes onto the transfer lever mounted to the measuring shaft. Proportional to the current differential pressure, the measurement shaft makes a rotational movement that the indicator translates into a rotation angle between 0 and 270°.

In the case of one-sided pressure by the measuring system above and beyond the measuring range, the over-pressure guard will be activated which supports the overloaded membrane.



## 3 Assembly

### 3.1 General information

The device can be mounted in one of the following ways (see Assembly):

#### 1. Wall mounting

The device is designed for installation onto flat assembly plates. The unit is equipped with a wall mounting plate for this mounting type.

#### 2. Pipe assembly

The device is equipped with a special pipe assembly set and is suitable for mounting to a 2" pipe (DN50).

#### 3. Panel mounting

Panel mounting is available in two installation models.

##### – Panel mounting fittings (Type 1)

This variant is only suitable for models with a small measuring system (Ø75) and a bayonet ring casing NG100.

##### – Panel installation with front ring (Type 2)

All models are suitable for this variant. A suitable steel construction must be used to ensure that the front plate can bear the weight of the DA01. This is possible e.g. by means of a combination with the wall or pipe assembly.

At the factory, the device is calibrated for vertical installation, but the installation position is arbitrary. For any installation positions that are not vertical, the zero-point signal can be corrected via the installed offset correction.

To ensure safety during installation and maintenance, we recommend installing a suitable shut-off valve on the system (see accessories).

### 3.2 Process connection

- By authorized and qualified specialized personnel only.
- The pipes need to be depressurized when the instrument is being connected.
- Appropriate steps must be taken to protect the device from pressure surges.
- Check that the device is suitable for the medium being measured.
- Maximum pressures must be observed (cf. Tech. data)

All supply lines are arranged so that there are no mechanical forces acting on the device.

The pressure lines must be kept as short as possible and installed without any tight bends to avoid delays.

The pressure lines must be installed at an inclination so that when fluids are measured no air pockets are created or when measuring gases, no water pockets are created. If the required inclination is not reached, water or air filters must be installed at suitable places.

The pressure lines need to be vented for fluid measuring media. [► 21].

If water is used as a measuring medium, the unit must be protected against frost.

If the pressure sensing lines are already pressurised at the time of commissioning, zero-point control and adjustment cannot be performed. In such cases, the device should be only connected to the mains without the pressure sensing lines.

The process connections are marked on the unit with (+) and (-) symbols. The pressure lines are to be mounted according to this marking.

#### Differential pressure

- ⊕ Higher pressure
- ⊖ lower pressure

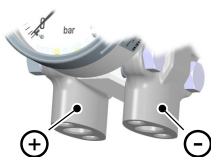


Fig. 12: Process connection

### 3.3 Electrical connections



#### **⚠ DANGER**

##### **Operation in areas at risk of explosion**

If operated in explosive areas, the electrical data of the unit and the valid local regulations and guidelines for the installation and operation of electrical systems in explosive areas must be observed.

- The electrical connection may only be completed by authorised and qualified specialists that have undergone additional training or briefings or have a permit to work on explosion-protected units in potentially explosive systems.
- Risks emanating from electrical current or voltage should be prevented by means of suitable measures.
- When the device is connected, national and international electrotechnical regulations must be observed.
- Disconnect the system from the mains before electrically connecting the device.
- Do not connect the connector if strained.
- Install the consumption-appropriate fuses.

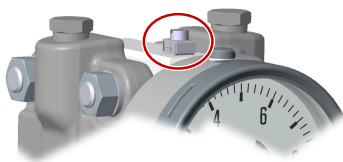


Fig. 13: Earthing connection

Only devices with contact elements are connected to the electrical supply. To this end there is a cable socket on the side of the device, or a HAN plug in the power plant model.

The outer ground connection must always be connected to the protective potential equalisation or a similar local potential equalisation. The connection is suitable for connecting fine-wire conductors up to 4 mm<sup>2</sup> or single-wire conductors up to 6 mm<sup>2</sup>.

The installed cables and wires must be tested with a reduced tensile force (25%) in compliance with Section A.3.1 of the standard EN 60079-0 and may only be used for permanent installation of operating equipment of Group II. The operator must ensure that the cables are connected with clamps accordingly.

The following data applies to the cable gland:

Cable gland	M20 x 1.5
Cable diameter	7 ... 13 mm
Max. conductor cross-section	1.5 mm <sup>2</sup>
Tightening torque	3 Nm (clockwise tight)
Key width	21

### 3.3.1 Cable socket (blue)

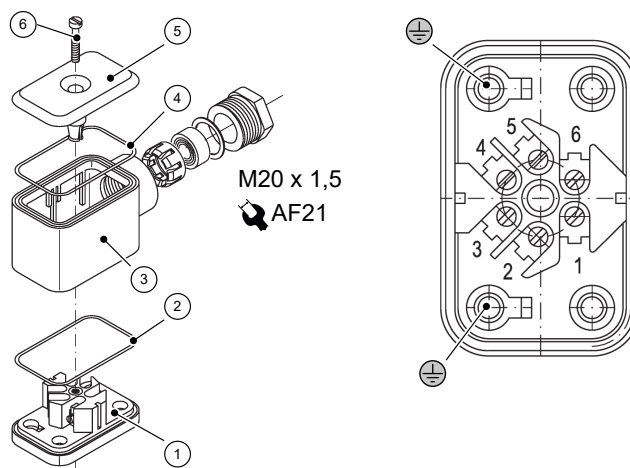


Fig. 14: Cable socket

1	Lower part	2	Sealing ring EPDM
3	Middle part	4	Sealing ring EPDM
5	Lid	6	Lid screw

### 3.3.2 Contact elements

Contact elements are supplied in accordance with data sheet KE . There you will find a representation of all variants, their pin assignment and the technical data.

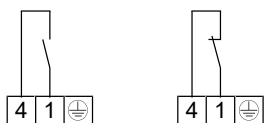


Fig. 15: Magnetic spring contacts

#### Magnetic spring contacts

The terminal numbers always correspond to the number of the contact. A maximum of 1 contact can be used. The contact can be a normally open or normally closed contact.

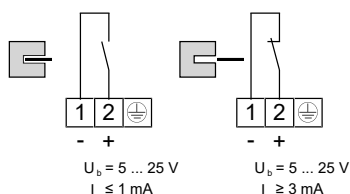


Fig. 16: Inductive contacts

#### Inductive contacts

With inductive contacts, the switching function is influenced not only by the proximity switch but also by the switching amplifier used. A maximum of 1 contact can be used. The contact can be designed as a normally open or normally closed contact.

### 3.3.3 Rotation angle transducers KINAX 3W2

The rotation angle encoder serves to record angular positions, to prepare and provide the measured values as electrical output signals 0/4 ... 20 mA for the following device. Rotation angle encoder is supplied in accordance with data sheet KE09. This contains further information about the pin assignment and the technical data.

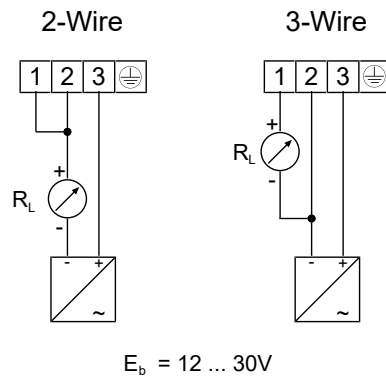


Fig. 17: Rotation angle transducers connection

### 3.4 Use in areas at risk of explosion

#### 3.4.1 Differential pressure transmitter without contact element

DA01 ... 0A

Ex II 2G Ex h IIC T4 Gb

Ex II 2D Ex h IIIC T95°C Db

Explosive areas Zone 1 and 2, and 21 and 22, risk from gases and dry dust.

#### Allowed temperatures:

- The maximum surface temperature 95 °C was determined under the following conditions without dust accumulation and safety factor.
- Allowed ambient temperature: -20°C to +60°C.
- Allowed medium temperature in the differential measurement unit < 85°C.



#### ⚠ WARNING

#### Compression heat

With gaseous mediums, the instrument temperature can increase due to compression heat. In such cases, the pressure change speed must be limited or reduced to the allow measuring substance temperature.

**NOTICE! For a differential pressure change between 10% and 90% of the measuring range and a pulse frequency < 0.06 Hz, the temperature increase is <10K.**

To avoid additional heating, the instruments may not be exposed to direct sunlight during operation!

The standards EN60079-0, EN 60079-31, EN ISO 80079-36 and EN ISO 80079-37 apply for the non-electrical part of the devices in terms of explosion protection. The applicable requirements of these standards are satisfied.

#### (a) European market (CE):

The documentation for the mechanical part were filed with the notified body NB 0044 TÜV-Nord-Cert under file number 8000373855.

#### (b) UK market (UKCA):

The documentation for the mechanical part were filed with the notified body NB 2812 Element Material Technology under file number 2812-012.

#### (c) Eurasian Economic Union (EAC):

The unit does not have ATEX approval for this market. It may only be used there as an industrial unit.

### 3.4.2 Differential pressure transmitter with magnetic spring contacts

#### DA01 ... 1B

Ⓔ II 2G Ex h IIC T4 Gb

Simple electric operating equipment acc. to EN60079-11 sec: 5.7 in explosive areas Zone 1 and 2.

Contact element: KE ## M ## 0B4H2

#### Allowed temperatures:

- The maximum surface temperature 95 °C was determined under the following conditions without dust accumulation and safety factor.
- Allowed ambient temperature: -20°C to +60°C.
- Allowed medium temperature in the differential measurement unit < 85°C.



#### **WARNING**

#### Compression heat

With gaseous mediums, the instrument temperature can increase due to compression heat. In such cases, the pressure change speed must be limited or reduced to the allow measuring substance temperature.

**NOTICE! For a differential pressure change between 10% and 90% of the measuring range and a pulse frequency < 0.06 Hz, the temperature increase is <10K.**

To avoid additional heating, the instruments may not be exposed to direct sunlight during operation!

The standards EN60079-0, EN ISO 80079-36 and EN ISO 80079-37 apply for the non-electrical part of the devices in terms of explosion protection. The applicable requirements of these standards are satisfied.

As a simple electrical operating unit, the installed electrical switch contacts fulfil the requirements of the standard EN60079-14 Par. 3.5.2. The devices are not labelled with respect to the electrical part.

#### (a) European market (CE):

The documentation for the mechanical part were filed with the notified body NB 0044 TÜV-Nord-Cert under file number 8000373855.

#### (b) UK market (UKCA):

The documentation for the mechanical part were filed with the notified body NB 2812 Element Material Technology under file number 2812-012.

#### (c) Eurasian Economic Union (EAC):

The unit does not have ATEX approval for this market. It may only be used there as an industrial unit.

#### Intrinsically safe power circuits

For use in areas at risk of explosion, instruments must be connected to certified, intrinsically safe electricity circuits.

Max. voltage	$U_{\max}$	30 V
Max. current	$I_{\max}$	200 mA
Max. power	$P_{\max}$	800 mW
Max. inner capacity	$C_{i \max}$	60 pF
Max. inner inductivity	$L_{i \max}$	4 µH

Recommend circuit breakers see accessories

### 3.4.3 Differential pressure transmitter with inductive contacts

#### DA01 ... 1C

⊕ II 2G Ex h IIC T4 Gb

⊕ II 2D Ex h IIIC T95°C Db

Explosive areas Zone 1 and 2, and 21 and 22, risk from gases and dry dust.

Contact element: KE ## I ## 0C0H2

#### Allowed temperatures:

- The maximum surface temperature 95 °C was determined under the following conditions without dust accumulation and safety factor.
- Allowed ambient temperature: -20°C to +60°C.
- Allowed medium temperature in the differential measurement unit < 85°C.



#### **WARNING**

##### Compression heat

With gaseous mediums, the instrument temperature can increase due to compression heat. In such cases, the pressure change speed must be limited or reduced to the allow measuring substance temperature.

**NOTICE! For a differential pressure change between 10% and 90% of the measuring range and a pulse frequency < 0.06 Hz, the temperature increase is <10K.**

To avoid additional heating, the instruments may not be exposed to direct sunlight during operation!

The standards EN60079-0, EN 60079-31, EN ISO 80079-36 and EN ISO 80079-37 apply for the non-electrical part of the devices in terms of explosion protection. The applicable requirements of these standards are satisfied.

The installed inductive proximity switches of the type SJ2-N (106575) are EC type-tested with the certificate PTB 99 ATEX 2219 X. The type of the installed proximity switch is stated on the type plate. The manufacturer is Pepperl+Fuchs GmbH. For more information about proximity switches, please visit the website [www.pepperl-fuchs.com](http://www.pepperl-fuchs.com).

##### (a) European market (CE):

The documentation for the mechanical part were filed with the notified body NB 0044 TÜV-Nord-Cert under file number 8000373855.

##### (b) UK market (UKCA):

The documentation for the mechanical part were filed with the notified body NB 2812 Element Material Technology under file number 2812-012.

##### (c) Eurasian Economic Union (EAC):

The unit does not have ATEX approval for this market. It may only be used there as an industrial unit.

### Intrinsically safe power circuits

For use in areas at risk of explosion, instruments must be connected to certified, intrinsically safe electricity circuits.

Max. voltage	$U_{\max}$	16 V
Max. current	$I_{\max}$	25 mA
Max. power	$P_{\max}$	64 mW
Max. inner capacity	$C_{i \max}$	30 nF
Max. inner inductivity	$L_{i \max}$	100 $\mu$ H

Recommend circuit breakers see accessories

### 3.4.4 Differential pressure transmitter with rotation angle transducer

#### DA01 ... 2D

Ex II 2G Ex h IIC T4 Gb

Explosive areas Zone 1 and 2, risk from gases.

Rotation angle transducer: KE0905#9

#### Allowed temperatures:

- The maximum surface temperature 95 °C was determined under the following conditions without dust accumulation and safety factor.
- Allowed ambient temperature: -20°C to +60°C.
- Allowed medium temperature in the differential measurement unit < 85°C.



#### WARNING

#### Compression heat

With gaseous mediums, the instrument temperature can increase due to compression heat. In such cases, the pressure change speed must be limited or reduced to the allow measuring substance temperature.

**NOTICE! For a differential pressure change between 10% and 90% of the measuring range and a pulse frequency < 0.06 Hz, the temperature increase is <10K.**

To avoid additional heating, the instruments may not be exposed to direct sunlight during operation!

The standards EN60079-0, EN ISO 80079-36 and EN ISO 80079-37 apply for the non-electrical part of the devices in terms of explosion protection. The applicable requirements of these standards are satisfied.

The installed capacitive rotation angle measuring transducer of the type KINAX 3W2 are EC type-tested with the certificate ZELM 10 ATEX 0427 X. The type of the installed rotation angle transducer is stated on the type plate. The manufacturer is Camille Bauer Metrawatt AG. For more information about the rotation angle transducer, please visit the website [www.camillebauer.com](http://www.camillebauer.com).

#### (a) European market (CE):

The documentation for the mechanical part were filed with the notified body NB 0044 TÜV-Nord-Cert under file number 8000373855.

#### (b) UK market (UKCA):

The documentation for the mechanical part were filed with the notified body NB 2812 Element Material Technology under file number 2812-012.

**(c) Eurasian Economic Union (EAC):**

The unit does not have ATEX approval for this market. It may only be used there as an industrial unit.

**Intrinsically safe power circuits**

For use in areas at risk of explosion, instruments must be connected to certified, intrinsically safe electricity circuits.

Max. voltage	$U_{\max}$	30 V
Max. current	$I_{\max}$	160 mA
Max. power	$P_{\max}$	1 W
Max. inner capacity	$C_{i \max}$	10 nF
Max. inner inductivity	$L_{i \max}$	0 $\mu$ H

Recommend circuit breakers see accessories



## 4 Commissioning

### 4.1 General

All electrical supply, operating and measuring lines, and the pressure connections must have been correctly installed before commissioning. All supply lines are arranged so that there are no mechanical forces acting on the device.

Check that all pressure connections are free of leaks before commissioning.

In models filled with fluid, the venting valve on the upper side of the bayonet casing must be opened before commissioning! To do this, turn the venting screw anticlockwise as far as it will go.

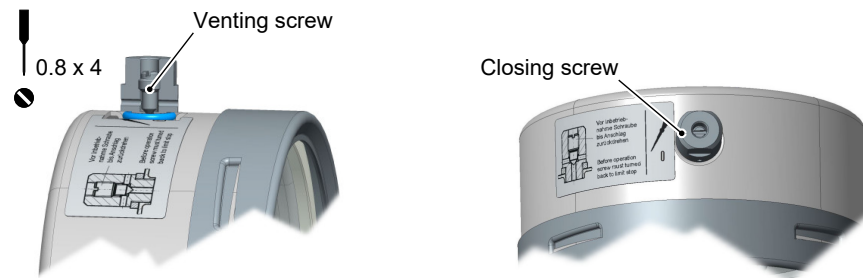


Fig. 18: Venting valve

### 4.2 Venting of the pressure lines



#### **WARNING**

##### **Risk connected to pressure**

Never remove the venting screw if the unit is still pressurised! Close the shut-off valves of the flanged fittings or depressurize the system.

The pressure lines need to be vented for before commissioning on devices that work with fluid media. Proceed as follows:

- Remove the venting screws of the two pressure chambers.
- Carefully increase the system pressure until the fluid level is 5 mm below the sealing surface of the threaded borehole.
- Close the device with the venting screws

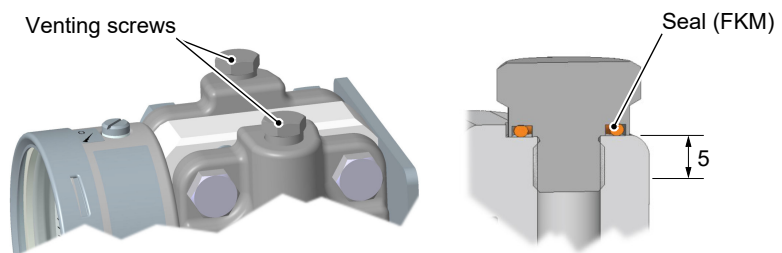


Fig. 19: Venting with fluid media

### 4.3 Zero point correction

The differential pressure measuring units are set in the factory before delivery so that they do not usually need to be adjusted at the assembly site. If this is still necessary, proceed as follows:

- Depressurize the measuring chamber (+) and (-) side or only exert the existing static system pressure.
- Remove the closing screw The zero point correction screw is located behind.
- Set the measurement value pointer to the scale zero point using the zero point correction screw.
- Mount the closing screw

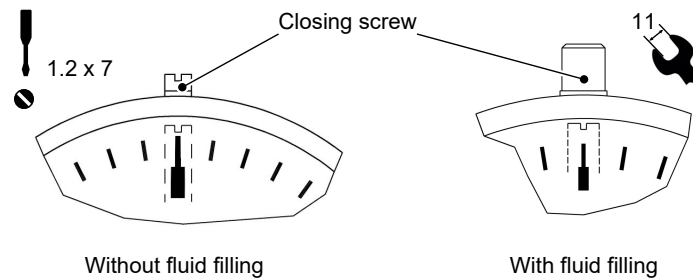


Fig. 20: Zero point correction screw

### 4.4 Switch point setting

There is an adjustment lock attached to the front pane of the measuring unit on units with contact elements. This means that the contacts attached to the target indicators can be set to any point along the scale.

To facilitate switching precision and the service life of the mechanical measuring system, the switching points should lie between 10% and 90% of the measuring range.

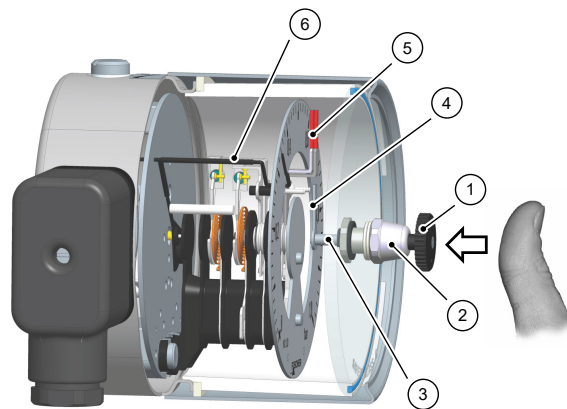


Fig. 21: Switch point setting

1	Adjustment key	2	Adjusting lock
3	Axle	4	Drive arm
5	Set-point display	6	Actual value display

**Adjustment sequence:**

- Press the axle inwards until the drive arm reaches behind the setting pin of the target value indicator.
- Set the target value indicator to the required switch point by turning the setting key.
- Relieve the axle.
- The switch-point setting can be secured against unintentional adjustment by removing the attachment screw and the adjustment key.

## 5 Servicing

### 5.1 Maintenance

The instrument is maintenance-free. We recommend the following regular inspection to guarantee reliable operation and a long service life:

- Check the function in combination with downstream components.
- Check the leak-tightness of the pressure connection lines.
- Check the electrical connections.

The exact test cycles need to be adapted to the operating and environmental conditions. In combination with other devices, the operating instructions for the other devices also need to be observed.

### 5.2 Maintenance

To ensure reliable operation and a long service life, we recommend carrying out the following test on a regular basis:

- Check the reading.
- Checking the switch function in connection with the downstream components.
- Checking the differential pressure lines for leaks.
- Checking the electrical connections (terminal connection of the cable).

The precise test cycles and operating and ambient conditions need to be adjusted. If several components of the unit interact, all operating instructions of the other units also need to be observed.



#### **WARNING**

##### **Dust deposits**

The device must be cleaned with a damp cloth at regular intervals to prevent heat build-up. Cleaning intervals depend on the amount of local dust.

### 5.3 Transport

The measuring device must be protected against impacts. It should be transported in the original packaging or a suitable transport container.

### 5.4 Service

All defective or faulty devices should be sent directly to our repair department. Please coordinate all shipments with our sales department.



#### **WARNING**

##### **Process media residues**

Process media residues in and on dismantled devices can be a hazard to people, animals and the environment. Take adequate preventive measures. If required, the devices must be cleaned thoroughly.

Return the device in the original packaging or a suitable transport container.

### 5.5 Disposal

**WEEE-Reg.-No. DE 31751293**



Please help to protect our environment and dispose of the workpieces and packaging materials used in an environmentally friendly manner. Observe the country-specific waste treatment and disposal regulations.

The year of production can be found in the production number (serial number):

**P#** **23** 03618.03.123

*Production year 2023* —↑

Further information on disposal can be found on our website  
[[www.fischermesstechnik.de](http://www.fischermesstechnik.de)]

## 6 Technical Data

### 6.1 Allgemeines

EXECUTION	Nominal pressure	Measuring cell	Application information
<b>DA01 V ...</b>	PN250	Ø75	<p>Measuring ranges: 0...0.6 bar to 0...25 bar</p> <p>Remote seals: It is possible to attach remote seals for all measuring ranges. The remote seals need to be designed for the displacement volume, the length of the cable and the application temperature.</p>
<b>DA01 U ...</b>	PN400	Ø75	<p>Measuring ranges: 0...0.6 bar to 0...25 bar</p> <p>Remote seals: It is possible to attach remote seals for all measuring ranges. The remote seals need to be designed for the displacement volume, the length of the cable and the application temperature.</p>
<b>DA01 W ...</b>	PN250	Ø130	<p>Measuring ranges: 0...40 mbar to 0...400 bar</p> <p>Limitations: Drag indicator measuring ranges <math>\geq 60</math> mbar Contacts / Transmitter measuring ranges <math>\geq 100</math> mbar</p> <p>Remote seals: It is possible to attach remote seals for measuring ranges <math>\geq 160</math> mbar. The remote seals need to be designed for the displacement volume, the length of the cable and the application temperature.</p>

## 6.2 Input variables

### Measuring variable

Differential pressure in gaseous and fluid aggressive media.

### General

Rated pressure of the measuring system	Max. static operating pressure
Durability	One-sided over-pressure-proof up to the rated pressure of the measuring system resistance to under-pressure on the (+) and (-) side
Measurement accuracy	±1.6 % of the measuring range (without contacts)
Temperature sensor	0.3 % / 10 °C
Zero-point adjustment	±25 % of the measuring range

### Measuring ranges

#### Small measuring cell Ø75

Measuring range	Device model		
	V	U	W
0 ... 0.6 bar	•	•	
0 ... 1 bar	•	•	
0 ... 1.6 bar	•	•	
0 ... 2.5bar	•	•	
0 ... 4.0 bar	•	•	
0 ... 6 bar	•	•	
0 ... 10 bar	•	•	
0 ... 16 bar	•	•	
0 ... 25 bar	•	•	

#### Large measuring cell Ø130

Measuring range	Device model		
	V	U	W
0 ... 40 mbar			•
0 ... 60 mbar			•
0 ... 100 mbar			•
0 ... 160 mbar			•
0 ... 250 mbar			•
0 ... 400 mbar			•

## 6.3 Operating conditions

Permissible ambient temperature	-20 ... +60 °C
Admissible storage temperature	-40 ... +80 °C
Admissible media temperature	< 85 °C
Type of protection:	IP 65 acc. to EN 60529

## 6.4 Construction design

### Materials

Measured value display	Material	Material no.	
		EU	AISI
Bayonet ring housing NG100, NG160	CrNi steel	1.4301	304
Process connection (all models)	CrNi steel	1.4404	316L
Intermediate plate	AlMgSiPb	HARD-COAT®	
Seals (O-rings)	FKM		
Motion train	CrNi steel		
Dial face and needle	Aluminium, painted, printed		
Inspection disk	Safety laminated glass		

MB = Measurement range

### Materials (media-contacting)

Design of the measuring system (R)	Material	Material no.	
		EU	AISI
Pressure caps	CrNi steel	1.4404	316L
Separation membranes	CrNi steel	1.4571	361Ti

Design of the measuring system (G)	Material	Material no.	
		EU	AISI
Pressure caps	CrNi steel	1.4404	316L
Separation membranes	Hastelloy® C276		

Process connection	Material	Material no.	
		EU	AISI
Connecting piece and port	CrNi steel	1.4404	316L
Cutting ring screw connections	CrNi steel	1.4571	

### Assembly

Wall mounting	Flanged assembly plate
Pipe mounting	Flanged assembly plate and attachment bracket
Panel mounting set type 1	Panel installation fittings for units with a small measuring cell (Ø75) and NG100 bayonet ring casing.
Panel mounting set type 2	Front ring and support construction



## 6.4.1 Additional Attachments

### 6.4.1.1 Contact elements

Limit signal transmitters (contacts) and capacitive rotation angle transducers with an output signal proportional to the angular position can be fitted into a housing augmented by a corresponding bayonet ring connector.

A certain minimum pressure level is required to operate this kind of contact element, which is why there is a lower limit for the mbar measuring ranges. This limit depends on the model type and is stated in the section 'General'.

**CAUTION! By driving and switching the contacts, the measuring deviation increases to a total of  $\pm 2.5\%$  of the measuring range.**

For more information and the order key, please refer to the data sheet:

- for limit switch in data sheet KE
- for rotation angle converter in the data sheet KE09

### 6.4.1.2 Liquid filling

#### **NOTICE! Only devices without contact device**

Under difficult operating conditions such as vibrations, extreme pressure fluctuations or to prevent condensation in open-air installations, the housing can be filled with the following liquids:

- Glycerine
- Silicon oil

### 6.4.1.3 Marker needle

A settable red marker can be attached to the scale to clearly show a certain pressure (limit value).

### 6.4.1.4 Trailing needle

The trailing needle is 'dragged' with the measured value indicator. As there is no fixed connection between the two needles, one-off maximum values are stored. The trailing needle can be reset using an adjusting dial in the window. Trailing needles cannot be used in conjunction with contacts. A certain minimum pressure level is required to move the drag indicator, which is why there is a lower limit for the mbar measuring ranges. This limit depends on the model type and is stated in the section 'General'.

### 6.4.1.5 Shut-off fitting

3-spindle valve block PN 100, DN 5, can be directly flanged

- Type DZ3600SV2700
- Material 1.4571
- Functions: Shut-off, pressure compensation

## 6.4.2 Electrical connection

In the case of devices with auxiliary electronic equipment, the connection is realised using a cable socket attached to the side and/or with a Han 7D connector on the power plant models. The pin assignment depends on the ordered model and is stated in the data sheet KE or KE09.



Cable socket

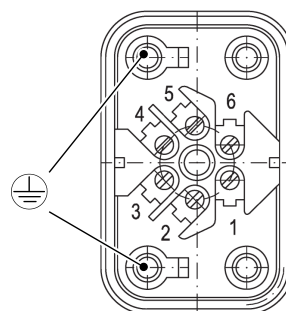


Fig. 22: Cable socket

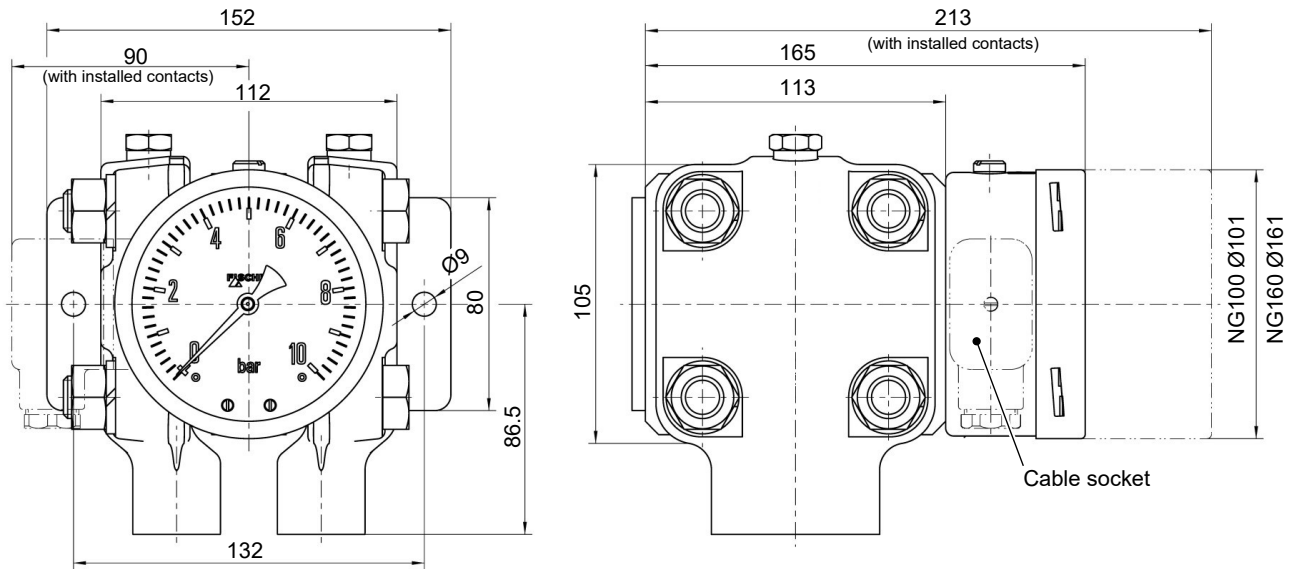
**Cable socket**

Number of screw terminals	6 + 2PE
Rated current	See data sheet KE
Rated voltage	250 V
Conductor cross-section	up to 1.5 mm <sup>2</sup> with wire protection
Cable gland	M20 x 1.5
Terminal range	7 ... 13 mm
Tightening torque	3 Nm
Key width	21
Protection class acc. to IEC 529	IP65 (when screwed in)

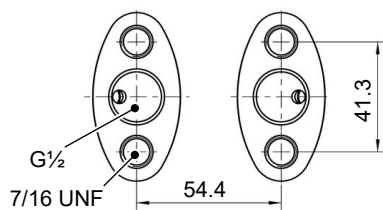
### 6.4.3 Dimensional drawings

All dimensions in mm unless otherwise stated

### Small measuring system (Ø75)



### Flange based on DIN EN 61518



### Wall mounting plate

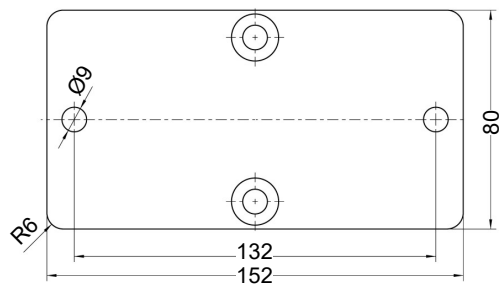
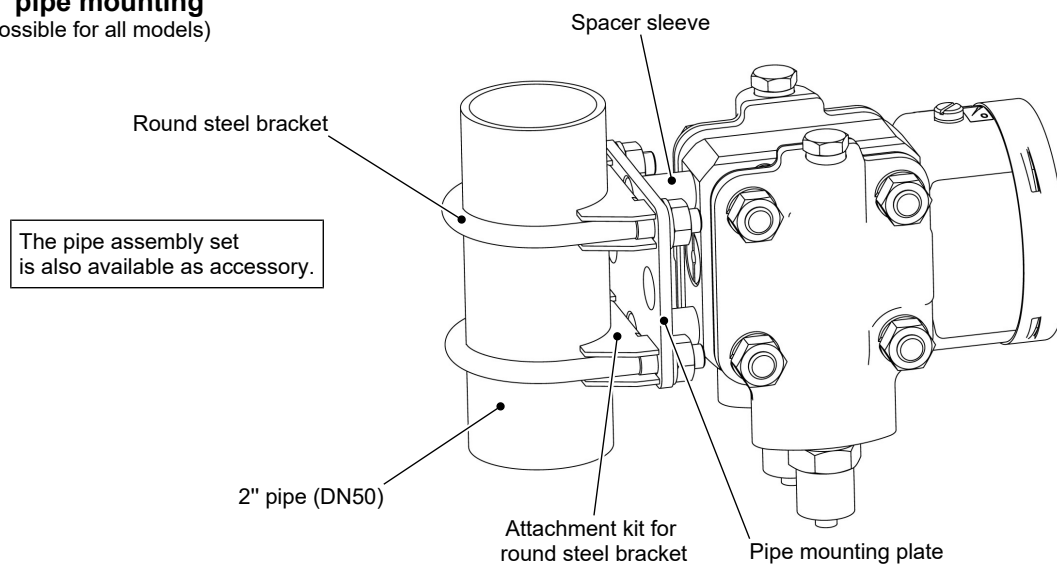


Fig. 23: Dimensional drawing (Small measuring system Ø75)

## 2" pipe mounting

**= pipe meaning**  
(possible for all models)



*Fig. 24: Pipe mounting*

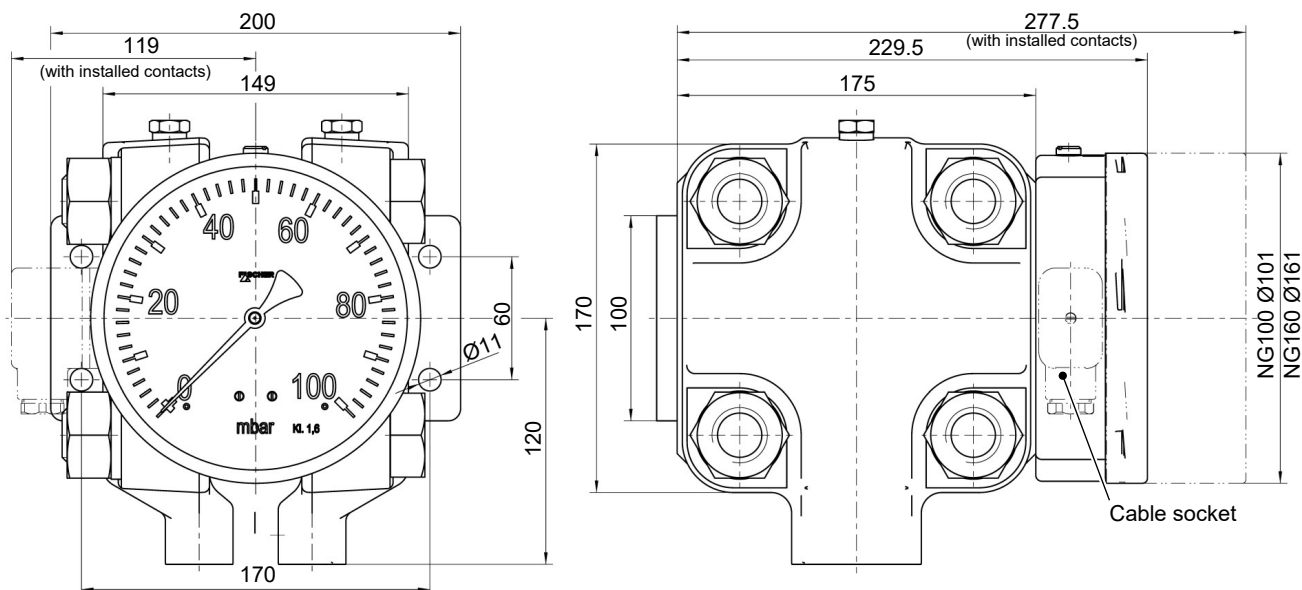
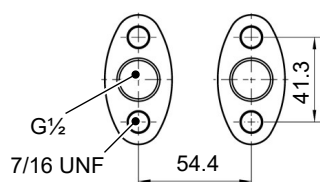
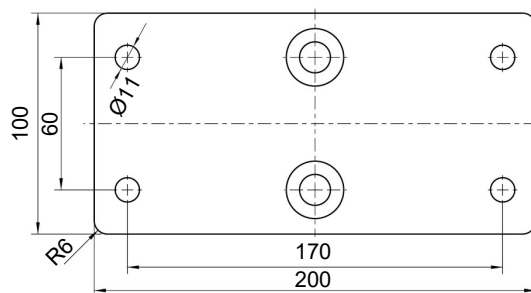
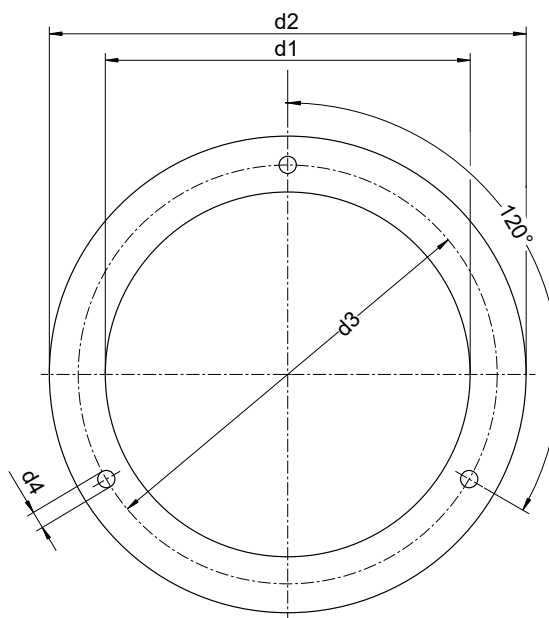
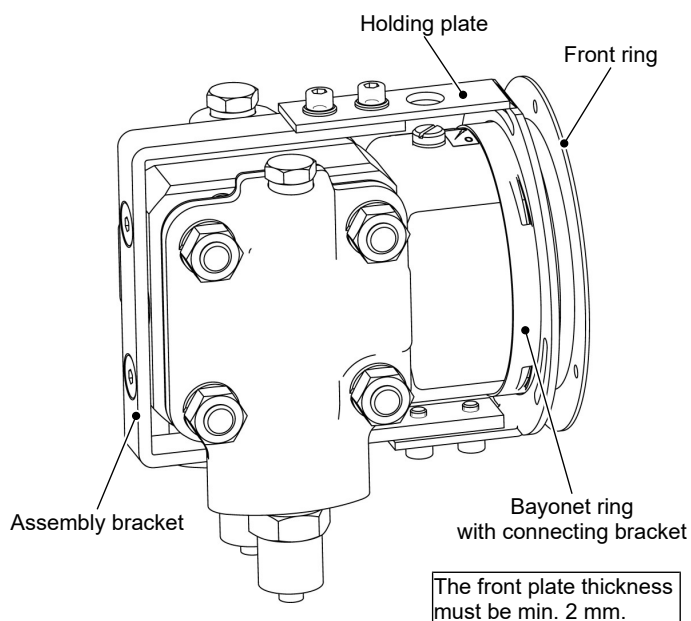
**Large measuring system (Ø130)****Flange based on DIN EN 61518****Wall mounting plate**

Fig. 25: Dimensional drawing (Large measuring system Ø130)

**Installation of front panel type 1**

(only small measuring system Ø75 and NG100 display)

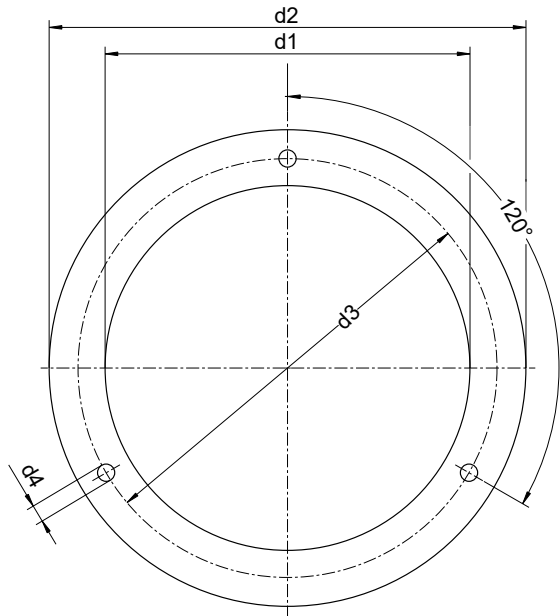
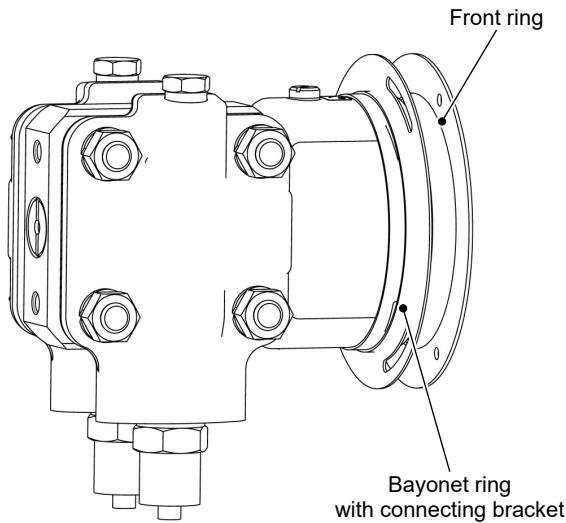


	d1	d2	d3	d4
<b>NG100</b>	101	132	116	4.8

Fig. 26: Installation of front panel with panel fittings

Installation of front panel type 2

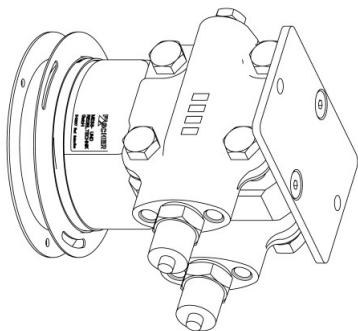
The front plate thickness must be min. 2 mm.



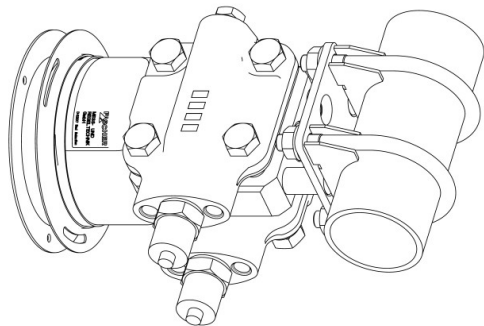
	d1	d2	d3	d4
NG100	101	132	116	4.8
NG160	161	196	178	5.8

A suitable steel construction must be used to ensure that the front plate can bear the weight of the device.

Examples:



Assembly on a mounting plate



Mounting to a 2" pipe

Fig. 27: Installation of front panel with front ring

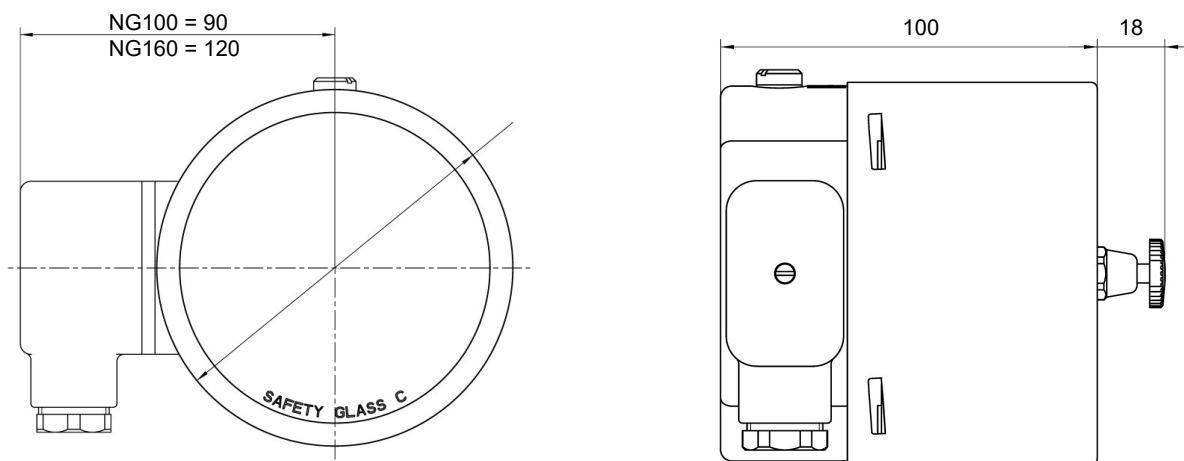
**Contact elements**

Fig. 28: Dimensional drawing of contact device

**Shut-off fitting**

with inner spindle thread

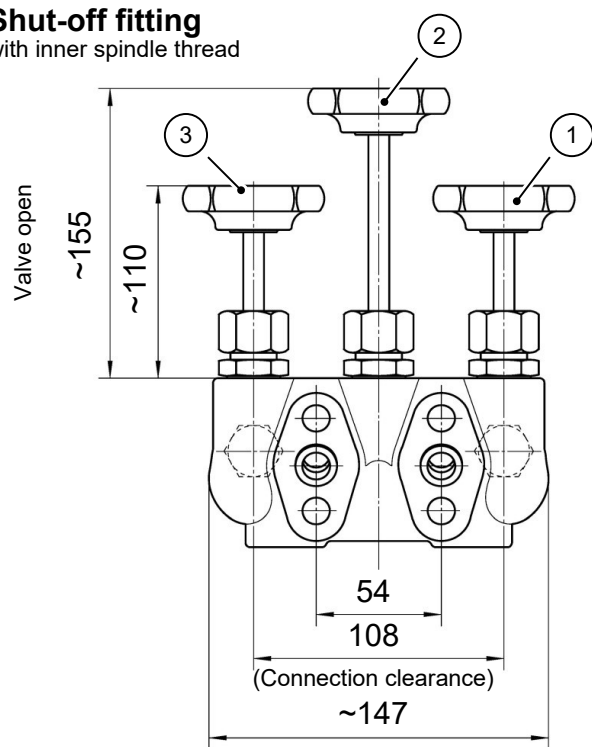
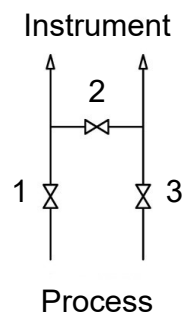
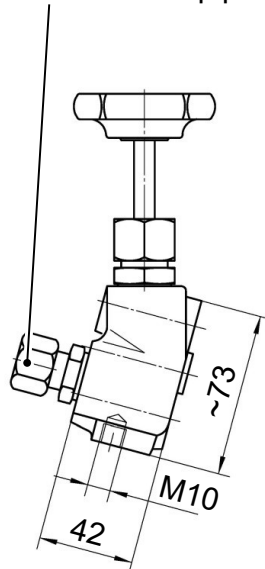
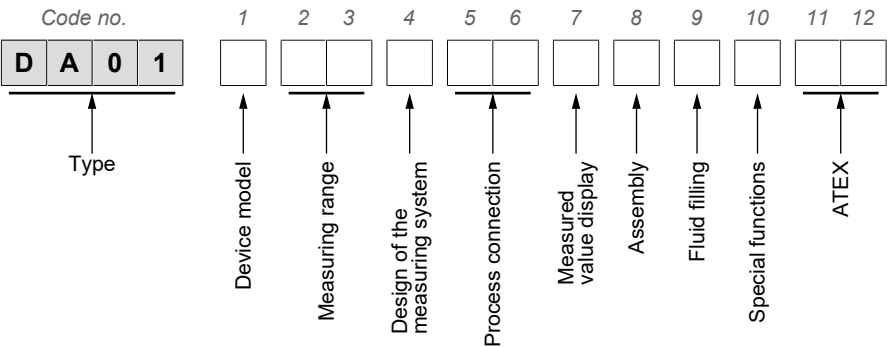
Cutting ring connection G3/8  
for 12 mm pipe

Fig. 29: Shutoff valve DZ3600SV2700

7 Order Codes



Device model:

[1]	Pressure level	Measuring cell
V	PN250	Ø75
U	PN400	Ø75
W	PN250	Ø130

Measuring range:

Small measuring system  
Ø75

[2.3]	Measuring range	Device model		
		V	U	W
01	0 ... 0.6 bar	•	•	
02	0 ... 1 bar	•	•	
03	0 ... 1.6 bar	•	•	
04	0 ... 2.5bar	•	•	
05	0 ... 4.0 bar	•	•	
06	0 ... 6 bar	•	•	
07	0 ... 10 bar	•	•	
08	0 ... 16 bar	•	•	
09	0 ... 25 bar	•	•	
99	Special measuring ranges	•	•	

Large measuring system  
Ø130

[2.3]	Measuring range	Device model		
		V	U	W
57	0 ... 40 mbar			•
58	0 ... 60 mbar			•
59	0 ... 100 mbar			•
60	0 ... 160 mbar			•
82	0 ... 250 mbar			•
83	0 ... 400 mbar			•
99	Special measuring ranges			•

**Design of the measuring system:**

[4]	
<b>R</b>	Pressure chamber CrNi steel 1.4404 (AISI 316L) Measuring membrane standard
<b>G</b>	Pressure chamber CrNi steel 1.4404 (AISI 316L) Measuring membrane Hastelloy C276

**Process connection:**

[5.6]	
<b>03</b>	Flange connection based on DIN EN 61518 with internal thread G $\frac{1}{2}$
<b>04</b>	Connecting piece G $\frac{1}{2}$ with inside thread 1/4 -18 NPT
<b>05</b>	Connecting piece G $\frac{1}{2}$ with inside thread 1/2 -14 NPT
<b>13</b>	Connection shanks G $\frac{1}{2}$ with external thread G $\frac{1}{2}$
<b>14</b>	Connecting port G $\frac{1}{2}$ with outer thread 1/4-18 NPT
<b>15</b>	Connecting port G $\frac{1}{2}$ with outer thread 1/2-14 NPT
<b>27</b>	Cutting ring connection in brass for 12 mm pipe

**Measured value display:**

[7]	
<b>L</b>	Bayonet ring housing NG100
<b>M</b>	Bayonet ring housing NG160

**Assembly:**

[8]	
<b>W</b>	Wall mounting
<b>R</b>	Pipe mounting
<b>T</b>	Panel installation fittings (only a small measuring system Ø75, NG100 measured value display without contact elements)
<b>G</b>	Front ring for panel mounting

**Fluid filling:**

[9] Only devices without contact device	
<b>0</b>	Without fluid filling
<b>1</b>	Glycerine
<b>4</b>	Paraffin oil
<b>5</b>	Silicon oil

**Special functions:**

[10]	
<b>0</b>	Without special function
<b>1</b>	Adjustable marker needle
<b>2</b>	Resettable drag needle



**Contacts/transmitters/ATEX:**

<b>[11.12] ATEX model</b>		
<b>0A</b>	Non-electrical unit (without switch contacts)	II 2G Ex h IIC T4 Gb II 2D Ex h IIIC T95°C Db
<b>1B</b>	Unit with magnetic spring contacts KE##M##0B4H2  Simple electrical operating equipment acc. to DIN EN 60079-11	II 2G Ex h IIC T4 Gb
<b>1C</b>	Unit with inductive contacts KE##I##0C0H2	II 2G Ex h IIC T4 Gb II 2D Ex h IIIC T95°C Db
<b>2D</b>	Unit with capacitive rotation angle transducer KE0905#9	II 2G Ex h IIC T4 Gb

**Limitations**

A minimum operating pressure, which not all measuring ranges achieve, is required to activate a contact element or a drag indicator. Please also note the information about the equipment features.

**7.1 Accessories**

<b>Order no.</b>	<b>Planned measures</b>	<b>Material</b>
<b>DZ3600SV2700</b>	Triple valve block DN5 PN420 <ul style="list-style-type: none"> <li>• Flange connection acc. to DIN EN 61518</li> <li>• Cutting ring screw connections 12 mm pipe</li> <li>• Including assembly set</li> </ul>	1.4571

<b>Order no.</b>	<b>Planned measures</b>	<b>Type</b>
<b>05003065</b>	Isolating unit amplifier 1-channel 24 V DC	TS500Ex-ia-1R-5
<b>05003066</b>	Isolating unit amplifier 2-channel 24 V DC	TS500Ex-ia-2R-5
<b>05003083</b>	Isolating unit amplifier 1-channel 230 V AC	TS500Ex-ia-1R-0
<b>05003084</b>	Isolating unit amplifier 2-channel 230 V AC	TS500Ex-ia-2R-0
<b>05003070</b>	Universal supplier isolator	ST500Ex-10-5
<b>05003086</b>	Universal supplier isolator	ST500Ex-10-0

(Translation) **CE**

## 8 EU Declarations of conformity

### EU Declaration of Conformity

For the product described as follows

**Product designation**                      **Differential Pressure Gauge**  
(without contact device)

**Type designation**                              **DA01 ... 0A**

it is hereby declared that it corresponds with the basic requirements specified in the following designated directives:

2014/34/EU	ATEX Directive
2011/65/EU	RoHS Directive
(EU) 2015/863	Delegated Directive amending Annex II to Directive 2011/65/EU

The products were tested in compliance with the following standards.

#### **Explosive atmospheres (ATEX)**

<b>DIN EN IEC 60079-0:2019-09</b>	<i>Explosive atmospheres - Part 0: Equipment - General requirements</i>
<b>EN IEC 60079-0:2018</b>	

*Correction1*  
**IEC 60079-0:2017/COR1:2020**

**DIN EN 60079-31:2014-12**  
**EN 60079-31:2014**

*Explosive atmospheres - Part 31: Equipment dust ignition protection by enclosure "t"*

**DIN EN ISO 80079-36:2016-12**  
**EN ISO 80079-36:2016**

*Explosive atmospheres - Part 36: Non-electrical equipment for explosive atmospheres - Basic method and requirements*

**DIN EN ISO 80079-37:2016-12**  
**EN ISO 80079-37:2016**

*Explosive atmospheres - Part 37: Non-electrical equipment for explosive atmospheres - Non-electrical type of protection constructional safety "c", control of ignition sources "b", liquid immersion "k"*

#### **RoHS Directive (RoHS 3)**

**DIN EN IEC 63000:2019-05**  
**EN IEC 63000:2018**

*Technical documentation for the assessment of electrical and electronic products with respect to the restriction of hazardous substances*

The documents are kept under the file number **8000373855** at the notified body **NB0044** :



**TÜV NORD CERT GmbH**  
Langemarckstraße 20  
45141 Essen

Also they were subjected to the conformity assessment procedure „**Internal production control**".

Sole responsibility for the issue of this declaration of conformity in relation to fulfilment of the fundamental requirements and the production of the technical documents is with the manufacturer.

<b>Manufacturer</b>	<b>FISCHER Mess- und Regeltechnik GmbH</b>
	Bielefelder Str. 37a
	32107 Bad Salzufflen, Germany
	Tel. +49 (0)5222 974 0

The devices bear the following marking:

**CE**  II 2G Ex h IIC T4 Gb  
 II 2D Ex h IIIC T95°C Db

**Bad Salzufflen**  
**10 Mar 2025**

T. Malischewski  
Managing Director

09010278 • CE\_EN\_DA01\_0A • Rev. ST4-C • 03/25



1 / 1

Fig. 30: CE\_EN\_DA01\_0A

(Translation) **CE**

## EU Declaration of Conformity

For the product described as follows

**Product designation**

**Differential Pressure Gauge**  
(with snap action contacts KE ## M ## 0B4H2)

**Type designation**

**DA01 ... 1B**

it is hereby declared that it corresponds with the basic requirements specified in the following designated directives:

2014/35/EU  
2014/34/EU  
2011/65/EU  
(EU) 2015/863

Low Voltage Directive  
ATEX Directive  
RoHS Directive  
Delegated Directive amending Annex II to Directive 2011/65/EU

The products were tested in compliance with the following standards.

### Low Voltage Directive (LVD)

DIN EN 61010-1:2020-03  
EN 61010-1:2010 + A1:2019 + A1:2019/  
AC:2019

Safety requirements for electrical equipment for measurement, control, and laboratory use -  
Part 1: General requirements

### Explosive atmospheres (ATEX)

DIN EN IEC 60079-0:2019-09  
EN IEC 60079-0:2018

Explosive atmospheres - Part 0: Equipment - General requirements

Correction 1  
IEC 60079-0:2017/COR1:2020

DIN EN ISO 80079-36:2016-12  
EN ISO 80079-36:2016

Explosive atmospheres - Part 36: Non-electrical equipment for explosive atmospheres - Basic method and requirements

DIN EN ISO 80079-37:2016-12  
EN ISO 80079-37:2016

Explosive atmospheres - Part 37: Non-electrical equipment for explosive atmospheres - Non-electrical type of protection constructional safety "c", control of ignition sources "b", liquid immersion "k"

The build-in contact device as an 'standard electrical equipment' meets the requirements of paragraph 3.5.2 of the following standard

DIN EN 60079-14:2014-10  
EN 60079-14:2014

Explosive atmospheres - Part 14: Electrical installations design, selection and erection

DIN EN 60079-14 Corrigendum 1:2016-06  
EN 60079-14:2014/AC:2016

Corrigendum to DIN EN 60079-14

### RoHS Richtlinie (RoHS 3)

DIN EN IEC 63000:2019-05  
EN IEC 63000:2018

Technical documentation for the assessment of electrical and electronic products with respect to the restriction of hazardous substances

The documents are kept under the file number **8000373855** at the notified body **NB0044** :

**TÜV NORD CERT GmbH**  
Langemarckstraße 20

45141 Essen

Also they were subjected to the conformity assessment procedure „Internal production control“.

09010280 • CE\_EN\_DA01\_1B • Rev. ST4-C • 03/25



1 / 2

Fig. 31: CE\_EN\_DA01\_1B Part1

---

Sole responsibility for the issue of this declaration of conformity in relation to fulfilment of the fundamental requirements and the production of the technical documents is with the manufacturer.

**Manufacturer****FISCHER Mess- und Regeltechnik GmbH**

Bielefelder Str. 37a  
32107 Bad Salzufen, Germany  
Tel. +49 (0)5222 974 0

The devices bear the following marking:



Bad Salzufen  
10 Mar 2025

A handwritten signature in blue ink, appearing to read 'T. Malischewski'.

---

T. Malischewski  
Managing Director



(Translation) **CE**

## EU Declaration of Conformity

For the product described as follows

Product designation

**Differential Pressure Gauge**  
(with inductive contacts KE ## I ## 0C0H2)

Type designation

**DA01 ... 1C**

it is hereby declared that it corresponds with the basic requirements specified in the following designated directives:

2014/34/EU

ATEX Directive

2011/65/EU

RoHS Directive

(EU) 2015/863

Delegated Directive amending Annex II to Directive 2011/65/EU

The products were tested in compliance with the following standards.

### Explosive atmospheres (ATEX)

DIN EN IEC 60079-0:2019-09

Explosive atmospheres - Part 0: Equipment - General requirements

EN IEC 60079-0:2018

Correction1

IEC 60079-0:2017/COR1:2020

DIN EN 60079-31:2014-12

Explosive atmospheres - Part 31: Equipment dust ignition protection by enclosure "t"

EN 60079-31:2014

DIN EN ISO 80079-36:2016-12

Explosive atmospheres - Part 36: Non-electrical equipment for explosive atmospheres - Basic method and requirements

EN ISO 80079-36:2016

DIN EN ISO 80079-37:2016-12

Explosive atmospheres - Part 37: Non-electrical equipment for explosive atmospheres - Non-electrical type of protection constructional safety "c", control of ignition sources "b", liquid immersion "k"

EN ISO 80079-37:2016

### RoHS directive (RoHS 3)

DIN EN IEC 63000:2019-05

Technical documentation for the assessment of electrical and electronic products with respect to the restriction of hazardous substances

EN IEC 63000:2018

The documents are kept under the file number **8000373855** at the notified body **NB0044** :

**TÜV NORD CERT GmbH**

Langemarckstraße 20

45141 Essen

The inductive proximity switches installed have been EC type tested: **PTB 99 ATEX 2219 X**

Also they were subjected to the conformity assessment procedure „**Internal production control**".

Sole responsibility for the issue of this declaration of conformity in relation to fulfilment of the fundamental requirements and the production of the technical documents is with the manufacturer.

Manufacturer

**FISCHER Mess- und Regeltechnik GmbH**

Bielefelder Str. 37a

32107 Bad Salzuflen, Germany

Tel. +49 (0)5222 974 0

The devices bear the following marking:



Ex II 2G Ex h IIC T4 Gb

Ex II 2D Ex h IIIC T95°C Db

Bad Salzuflen  
10 Mar 2025

T. Malischewski  
Managing Director

09010282 • CE\_EN\_DA01\_1C • Rev. ST4-C • 03/25



1 / 1

Fig. 33: CE\_EN\_DA01\_1C



(Translation) 

## EU Declaration of Conformity

For the product described as follows

**Product designation**

**Differential Pressure Gauge**  
(with transmitter for angular position KE0905#9)

**Type designation**

**DA01 ... 2D**

it is hereby declared that it corresponds with the basic requirements specified in the following designated directives:

2014/30/EU	EMC Directive
2014/34/EU	ATEX Directive
2011/65/EU	RoHS Directive
(EU) 2015/863	Delegated Directive amending Annex II to Directive 2011/65/EU

The products were tested in compliance with the following standards.

**DIN EN IEC 61000-6-2:2019-11**  
EN IEC 61000-6-2:2019  
**DIN EN IEC 61000-6-3:2022-06**  
EN IEC 61000-6-3:2021

### Electromagnetic compatibility (EMC)

Electromagnetic compatibility (EMC) - Part 6-2: Generic standards - Immunity standard for industrial environments  
Electromagnetic compatibility (EMC) - Part 6-3: Generic standards - Emission standard for equipment in residential environments

**DIN EN IEC 60079-0:2019-09**  
EN IEC 60079-0:2018  
Correction1  
IEC 60079-0:2017/COR1:2020

### Explosive atmospheres (ATEX)

Explosive atmospheres - Part 0: Equipment - General requirements

**DIN EN ISO 80079-36:2016-12**  
EN ISO 80079-36:2016  
**DIN EN ISO 80079-37:2016-12**  
EN ISO 80079-37:2016

Explosive atmospheres - Part 36: Non-electrical equipment for explosive atmospheres - Basic method and requirements  
Explosive atmospheres - Part 37: Non-electrical equipment for explosive atmospheres - Non-electrical type of protection constructional safety "c", control of ignition sources "b", liquid immersion "k"

**DIN EN IEC 63000:2019-05**  
EN IEC 63000:2018

### RoHS directive (RoHS 3)

Technical documentation for the assessment of electrical and electronic products with respect to the restriction of hazardous substances

The documents are kept under the file number **8000373855** at the notified body **NB0044** :

**TÜV NORD CERT GmbH**  
Langemarckstraße 20  
45141 Essen

The built-in transmitter for angular position is EC type-tested: **ZELM 10 ATEX 0427 X**

Also they were subjected to the conformity assessment procedure „Internal production control“.

09010284 • CE\_EN\_DA01\_2D • Rev. ST4-C • 03/25



1 / 2

Fig. 34: CE\_EN\_DA01\_2D Part1

---

Sole responsibility for the issue of this declaration of conformity in relation to fulfilment of the fundamental requirements and the production of the technical documents is with the manufacturer.

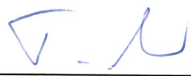
**Manufacturer****FISCHER Mess- und Regeltechnik GmbH**

Bielefelder Str. 37a  
32107 Bad Salzuflen, Germany  
Tel. +49 (0)5222 974 0

The devices bear the  
following marking:



Bad Salzuflen  
10 Mar 2025

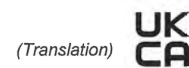


---

T. Malischewski  
Managing Director



## 9 UKCA Declarations of Conformity



### UKCA Declaration of Conformity

For the product described as follows

**Product designation**                      **Differential Pressure Gauge**  
(without contact device)

**Type designation**                              **DA01 ... 0A**

is hereby declared to comply with the essential requirements, specified in the following UK regulations:

<b>Statutory regulation No.</b>	<b>Description</b>
2016 No. 1107	<i>The Equipment and Protective Systems Intended for Use in Potentially Explosive Atmospheres Regulations 2016</i>
2022 No. 1647	<i>The Hazardous Substances and Packaging (Legislative Functions and Amendment) (EU Exit) Regulations 2020</i>
2021 No. 422	<i>The Restriction of the Use of Certain Hazardous Substances in Electrical and Electronic Equipment (Amendment) Regulations 2021</i>

The products have been tested according to the following standards.

#### Explosive atmospheres (ATEX):

<i>BS EN IEC 60079-0:2018-07-09</i>	<i>Explosive atmospheres. Equipment. General requirements</i>
<i>BS EN 60079-31:2014-07-31</i>	<i>Explosive atmospheres. Equipment dust ignition protection by enclosure "t"</i>
<i>BS EN ISO 80079-36:2016-04-30</i>	<i>Explosive atmospheres. Non-electrical equipment for explosive atmospheres. Basic method and requirements</i>
<i>BS EN ISO 80079-37:2016-04-30</i>	<i>Explosive atmospheres. Non-electrical equipment for explosive atmospheres. Non electrical type of protection constructional safety "c", control of ignition source "b", liquid immersion "k"</i>

#### Restriction of Hazardous Substances (RoHS):

<i>BS EN IEC 63000:2018-12-10</i>	<i>Technical documentation for the assessment of electrical and electronic products with respect to the restriction of hazardous substances</i>
-----------------------------------	---

The documents are kept under file number **2812-012** at the notified body **NB-No. 2812**.

#### Element Materials Technology

Unit 1 Pendle Place  
Skelmersdale, WN8 9PN, United Kingdom

The sole responsibility for drawing up this declaration of conformity in relation to the fulfilment of the essential requirements and the preparation of the technical documentation lies with the manufacturer.

**Manufacturer**                                      **FISCHER Mess- und Regeltechnik GmbH**  
Bielefelder Str. 37a  
32107 Bad Salzuflen, Germany  
Tel. +49 (0)5222 974 0

The devices bear  
the following marking:

**UK**    II 2G Ex h IIC T4 Gb  
**CA**    II 2D Ex h IIIC T95°C Db

**Bad Salzuflen**  
**04 Okt 2021**

G. Gödde  
Managing director

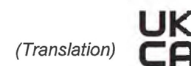
09010576 • CE\_EN\_DA01\_0A • Rev. ST4-A • 09/21



1 / 1

Fig. 36: UKCA\_EN\_DA01\_0A





## UKCA Declaration of Conformity

For the product described as follows

**Product designation** **Differential Pressure Gauge**  
(with snap action contacts KE ## M ## 0B4H2)

**Type designation** **DA01 ... 1B**

is hereby declared to comply with the essential requirements, specified in the following UK regulations:

<b>Statutory regulation No.</b>	<b>Description</b>
2016 No. 1107	<i>The Equipment and Protective Systems Intended for Use in Potentially Explosive Atmospheres Regulations 2016</i>
2016 No. 1101	<i>The Electrical Equipment (Safety) Regulations 2016</i>
2022 No. 1647	<i>The Hazardous Substances and Packaging (Legislative Functions and Amendment) (EU Exit) Regulations 2020</i>
2021 No. 422	<i>The Restriction of the Use of Certain Hazardous Substances in Electrical and Electronic Equipment (Amendment) Regulations 2021</i>

The products have been tested according to the following standards.

### Explosive atmospheres (ATEX):

<i>BS EN IEC 60079-0:2018-07-09</i>	<i>Explosive atmospheres. Equipment. General requirements</i>
<i>BS EN ISO 80079-36:2016-04-30</i>	<i>Explosive atmospheres. Non-electrical equipment for explosive atmospheres. Basic method and requirements</i>
<i>BS EN ISO 80079-37:2016-04-30</i>	<i>Explosive atmospheres. Non-electrical equipment for explosive atmospheres. Non electrical type of protection constructional safety "c", control of ignition source "b", liquid immersion "k"</i>

The installed electrical switching contacts fulfil the requirements of the following standard as 'simple electrical equipment' according to paragraph 3.5.2.

<i>BS EN 60079-14:2014-06-30</i>	<i>Explosive atmospheres. Electrical installations design, selection and erection.</i>
----------------------------------	--

### Low Voltage Directive (LVD):

<i>BS EN 61010-1+A1:2017-03-31</i>	<i>Safety requirements for electrical equipment for measurement, control, and laboratory use. General requirements</i>
------------------------------------	--

### Restriction of Hazardous Substances (RoHS):

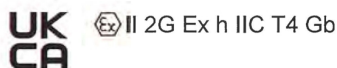
<i>BS EN IEC 63000:2018-12-10</i>	<i>Technical documentation for the assessment of electrical and electronic products with respect to the restriction of hazardous substances</i>
-----------------------------------	---

The documents are kept under file number **2812-012** at the notified body **NB-No. 2812**.

### Element Materials Technology

Unit 1 Pendle Place  
Skelmersdale, WN8 9PN, United Kingdom

The devices bear  
the following marking:



09010578 • UKCA\_EN\_DA01\_1B • Rev. ST4-A • 09/21



1 / 2

Fig. 37: UKCA\_EN\_DA01\_1B\_Seite\_1

The sole responsibility for drawing up this declaration of conformity in relation to the fulfilment of the essential requirements and the preparation of the technical documentation lies with the manufacturer.

**Manufacturer****FISCHER Mess- und Regeltechnik GmbH**

Bielefelder Str. 37a  
32107 Bad Salzuflen, Germany

Tel. +49 (0)5222 974 0

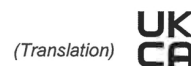


**Bad Salzuflen**  
**04 Okt 2021**

G. Götde  
Managing director



Fig. 38: UKCA\_EN\_DA01\_1B\_Seite\_2



## UKCA Declaration of Conformity

For the product described as follows

**Product designation** **Differential Pressure Gauge**  
(with inductive contacts KE ## I ## 0C0H2)

**Type designation** **DA01 ... 1C**

is hereby declared to comply with the essential requirements, specified in the following UK regulations:

<b>Statutory regulation No.</b>	<b>Description</b>
2016 No. 1107	<i>The Equipment and Protective Systems Intended for Use in Potentially Explosive Atmospheres Regulations 2016</i>
2016 No. 1091	<i>The Electromagnetic Compatibility Regulations 2016</i>
2022 No. 1647	<i>The Hazardous Substances and Packaging (Legislative Functions and Amendment) (EU Exit) Regulations 2020</i>
2021 No. 422	<i>The Restriction of the Use of Certain Hazardous Substances in Electrical and Electronic Equipment (Amendment) Regulations 2021</i>

The products have been tested according to the following standards.

### Explosive atmospheres (ATEX):

BS EN IEC 60079-0:2018-07-09	<i>Explosive atmospheres. Equipment. General requirements</i>
BS EN 60079-31:2014-07-31	<i>Explosive atmospheres. Equipment dust ignition protection by enclosure "t"</i>
BS EN ISO 80079-36:2016-04-30	<i>Explosive atmospheres. Non-electrical equipment for explosive atmospheres. Basic method and requirements</i>
BS EN ISO 80079-37:2016-04-30	<i>Explosive atmospheres. Non-electrical equipment for explosive atmospheres. Non electrical type of protection constructional safety "c", control of ignition source "b", liquid immersion "k"</i>

The built-in inductive proximity switches are EC type tested: **PTB 99 ATEX 2219 X**.

### Electromagnetic compatibility (EMC):

BS EN IEC 61000-6-2:2019-02-25	<i>Electromagnetic compatibility (EMC). Generic standards. Immunity standard for industrial environments</i>
BS EN IEC 61000-6-3:2021-03-30	<i>Electromagnetic compatibility (EMC). Generic standards. Emission standard for equipment in residential environments</i>

### Restriction of Hazardous Substances (RoHS):

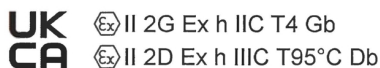
BS EN IEC 63000:2018-12-10	<i>Technical documentation for the assessment of electrical and electronic products with respect to the restriction of hazardous substances</i>
----------------------------	---

The documents are kept under file number **2812-012** at the notified body **NB-No. 2812**.

### Element Materials Technology

Unit 1 Pendle Place  
Skelmersdale, WN8 9PN, United Kingdom

**The devices bear the following marking:**



The sole responsibility for drawing up this declaration of conformity in relation to the fulfilment of the essential requirements and the preparation of the technical documentation lies with the manufacturer.

**Manufacturer****FISCHER Mess- und Regeltechnik GmbH**

Bielefelder Str. 37a  
32107 Bad Salzuflen, Germany  
Tel. +49 (0)5222 974 0



**Bad Salzuflen**  
**04 Okt 2021**

G. Götde  
Managing director



Fig. 40: UKCA\_EN\_DA01\_1C\_Seite\_2



## UKCA Declaration of Conformity

For the product described as follows

**Product designation** **Differential Pressure Gauge**  
(with transmitter for angular position KE0905#9)

**Type designation** **DA01 ... 2D**

is hereby declared to comply with the essential requirements, specified in the following UK regulations:

<b>Statutory regulation No.</b>	<b>Description</b>
2016 No. 1107	<i>The Equipment and Protective Systems Intended for Use in Potentially Explosive Atmospheres Regulations 2016</i>
2016 No. 1091	<i>The Electromagnetic Compatibility Regulations 2016</i>
2022 No. 1647	<i>The Hazardous Substances and Packaging (Legislative Functions and Amendment) (EU Exit) Regulations 2020</i>
2021 No. 422	<i>The Restriction of the Use of Certain Hazardous Substances in Electrical and Electronic Equipment (Amendment) Regulations 2021</i>

The products have been tested according to the following standards.

### Explosive atmospheres (ATEX):

<i>BS EN IEC 60079-0:2018-07-09</i>	<i>Explosive atmospheres. Equipment. General requirements</i>
<i>BS EN ISO 80079-36:2016-04-30</i>	<i>Explosive atmospheres. Non-electrical equipment for explosive atmospheres. Basic method and requirements</i>
<i>BS EN ISO 80079-37:2016-04-30</i>	<i>Explosive atmospheres. Non-electrical equipment for explosive atmospheres. Non electrical type of protection constructional safety "c", control of ignition source "b", liquid immersion "k"</i>

The built-in angle of rotation transducer is EC type-tested: **ZELM 10 ATEX 0427 X**.

### Electromagnetic compatibility (EMC):

<i>BS EN IEC 61000-6-2:2019-02-25</i>	<i>Electromagnetic compatibility (EMC). Generic standards. Immunity standard for industrial environments</i>
<i>BS EN IEC 61000-6-3:2021-03-30</i>	<i>Electromagnetic compatibility (EMC). Generic standards. Emission standard for equipment in residential environments</i>

### Restriction of Hazardous Substances (RoHS):

<i>BS EN IEC 63000:2018-12-10</i>	<i>Technical documentation for the assessment of electrical and electronic products with respect to the restriction of hazardous substances</i>
-----------------------------------	---

The documents are kept under file number **2812-012** at the notified body **NB-No. 2812**.

### Element Materials Technology

Unit 1 Pendle Place  
Skelmersdale, WN8 9PN, United Kingdom

The devices bear  
the following marking:



Ex II 2G Ex h IIC T4 Gb

09010582 • UKCA\_EN\_DA01\_2D • Rev. ST4-A • 09/21



1 / 2

Fig. 41: UKCA\_EN\_DA01\_2D\_Seite\_1

The sole responsibility for drawing up this declaration of conformity in relation to the fulfilment of the essential requirements and the preparation of the technical documentation lies with the manufacturer.

**Manufacturer****FISCHER Mess- und Regeltechnik GmbH**

Bielefelder Str. 37a  
32107 Bad Salzuflen, Germany

Tel. +49 (0)5222 974 0



**Bad Salzuflen**  
**04 Okt 2021**

G. Gödde  
Managing director



Fig. 42: UKCA\_EN\_DA01\_2D\_Seite\_2



## 10 EAC Declaration

### ЕВРАЗИЙСКИЙ ЭКОНОМИЧЕСКИЙ СОЮЗ ДЕКЛАРАЦИЯ О СООТВЕТСТВИИ



**Заявитель** Общество с ограниченной ответственностью «МАТИС-М»

Место нахождения: Российская Федерация, Москва, 117261, улица Вавилова, дом 70, строение 3, Комната Правления. Адрес места осуществления деятельности: Российская Федерация, Москва, 109029, Сибирский проезд, дом 2, строение 9. Основной государственный регистрационный номер: 1037739575125, номер телефона: +74957252309, адрес электронной почты: info@matis-m.ru,  
в лице Генерального директора Шарова Александра Анатольевича

заявляет, что Измерительные устройства: Манометры для измерения дифференциального давления, серии DS, DA

**Изготовитель** FISCHER Mess- und Regeltechnik GmbH. Место нахождения и адрес места осуществления деятельности: Германия, Bielefelder Str. 37a D-32107 Bad Salzuflen Germany, координаты системы ГЛОНАСС (52.056894, 8.725524)

Продукция изготовлена в соответствии с Директивой 2014/35/EU

Код ТН ВЭД ЕАЭС 9026 20 400 0 Серийный выпуск

**соответствует требованиям**

ТР ТС 004/2011 О безопасности низковольтного оборудования

**Декларация о соответствии принята на основании**

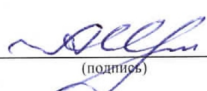

Протокол испытаний № АЛС-011-0163 от 27.01.2022 года, выданного испытательной лабораторией Общества с ограниченной ответственностью «АТМОСФЕРА», аттестат аккредитации РОСС RU.32468.04ЛЕГО.002

Схема декларирования 1д

**Дополнительная информация**

Условия и сроки хранения стандартные при нормальных значениях климатических факторов внешней среды, срок службы (годности) указан в эксплуатационной документации. Договор на выполнение функций иностранного изготовителя № 2016-09-29/01 от 29.09.2016.

**Декларация о соответствии действительна с даты регистрации по 27.01.2027 включительно**



 М. П. Шаров Александр Анатольевич  
 (подпись) (Ф.И.О. заявителя)

Регистрационный номер декларации о соответствии: ЕАЭС N RU Д-DE.PA01.B.43065/22

Дата регистрации декларации о соответствии: 28.01.2022

Fig. 43: EAC\_RU\_DS-DA



**FISCHER Mess- und Regeltechnik GmbH**

Bielefelder Str. 37a  
D-32107 Bad Salzuflen

Tel. +49 5222 974-0

Fax +49 5222 7170

[www.fischermesstechnik.de](http://www.fischermesstechnik.de)  
[info@fischermesstechnik.de](mailto:info@fischermesstechnik.de)