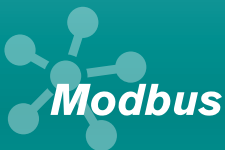
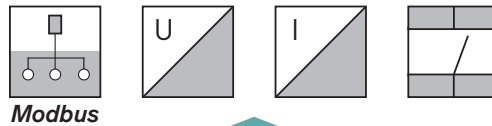


Universal Measuring Indicator and Data Logger

EA15



FISCHER inTouch

Monitoring – Documentation – Optimisation



Benefits at a glance

Universal measuring value indicator and data logger

- ▲ 2.8" TFT touch LC display for clear viewing of measured values and operating states
- ▲ 2- or 4-channel version
- ▲ Optional switching outputs

Flexible and precise

- ▲ Parameterizable analogue outputs
- ▲ Modbus RTU digital interface
- ▲ Programmable switching outputs
- ▲ Linkage of any sensors possible with analogue uniform signal
- ▲ Nonlinearity of displayed values 0.10 % FS

Safety combined with reliability

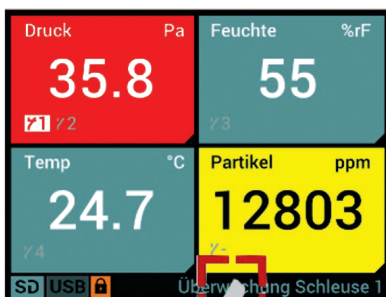
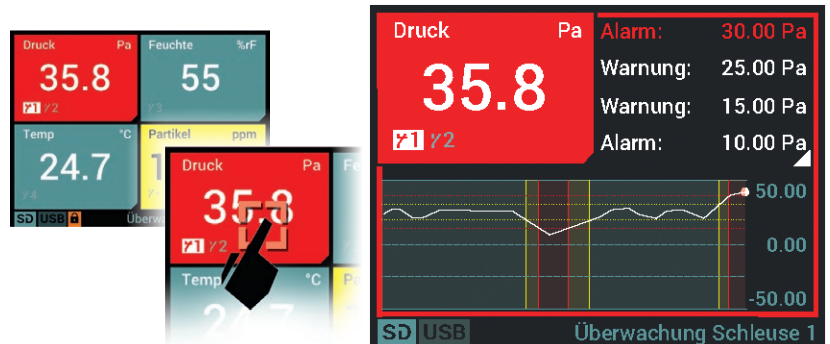
- ▲ Process documentation with event log
- ▲ Diversity of characteristic curve functions and parameter-setting facilities
- ▲ Parameterisable visual and audio alerts for warning and alarm situations

Beneficially applicable

- ▲ Dynamic filter monitoring system to optimise operating costs by precision detection of filter contamination, avoidance of unscheduled outages and maintenance of environmental and quality standards
- ▲ Process optimisation by means of focal-point/error analysis with higher sampling rate
- ▲ Monitoring of process variables T, rF, Δp and particle concentration in clean rooms and safety laboratories

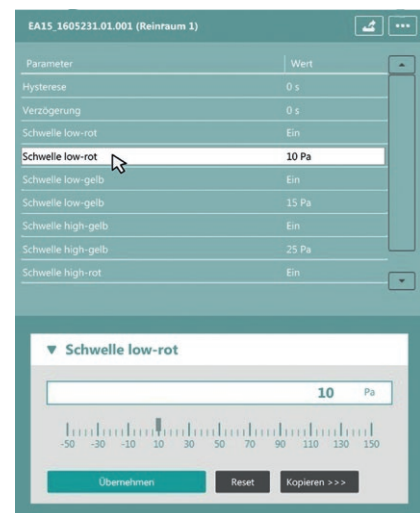
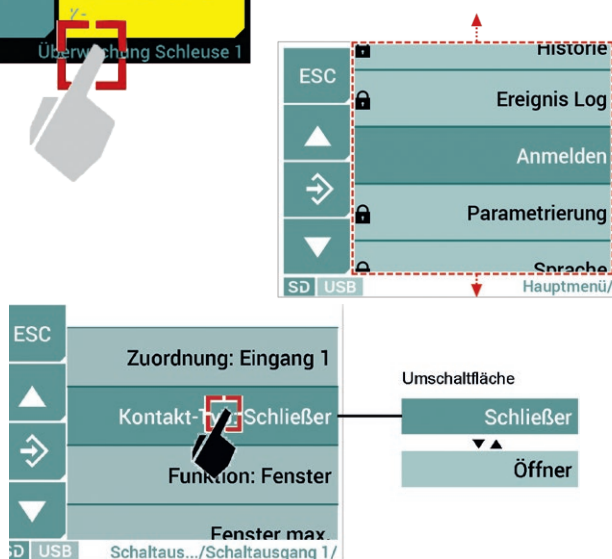
Large LC display

- ▲ Excellent readability of up to 4 measured values
- ▲ List-display, tiling-presentation and detail-view facilities
- ▲ Display of measured-value progressions in detail



Easy operation and parameterisation

- ▲ Easy-to-learn intuitive touch screen operation
- ▲ Simple appliance parameterisation with plain text display on the unit itself or via FISCHER inTouch PC software



Enhanced connectivity

- ▲ Electrical connections using industrial standard M12 connectors
- ▲ Link-up to a monitoring or control system through analogue and switching outputs or digital interface Modbus RTU
- ▲ Data logging on micro SD card in versatile processible file format
- ▲ Micro USB connector





Quick installation and commissioning

- ▲ Installation through panel mounting holes or using wall-mount adaptor
- ▲ Industrial M12 plug connectors

Technical data

Input parameters

- ▲ 2 or 4 analogue inputs for measuring transducer with output signals / current or voltage (0...20 mA, 4...20 mA, 0...10 V)

Output parameters

(on analogue and switching output)

- ▲ 2 or 4 analogue outputs with programmable uniform signals / current or voltage (0...20 mA, 4...20 mA, 0...10 V)
- ▲ None, 2 or 4 switching outputs with programmable switching function
- ▲ Choice of potential-free relay contacts or potential-free semiconductor switches (MOSFET)

Operating conditions

- ▲ Permissible ambient temperature: -10...+70 °C
- ▲ Housing protection class: IP65

Digital interfaces

- ▲ Micro USB 2.0
- ▲ Micro SD card up to 32 GB
- ▲ Modbus RTU

Display and user interface

- ▲ Display size: 2.8"
- ▲ Colour LCD type: TN TFT
- ▲ Resolution: 320 x 240 pixels
- ▲ Touch: resistive

Auxiliary power

- ▲ Nominal voltage: 24 V AC/DC
- ▲ Voltage range: 12...32 V AC/DC
- ▲ Power consumption: 10 W max.

Menu languages

- ▲ Several menu languages available

www.fischermesstechnik.de

FISCHER Mess- und Regeltechnik GmbH

Bielefelder Straße 37a · 32107 Bad Salzuflen · GERMANY · Fon +49 5222 974-270 · Fax +49 5222 7170

Mail: info@fischermesstechnik.de · Web: www.fischermesstechnik.de